

# A Serotonin Transporter Gene Promoter Polymorphism (5-HTTLPR) and Prefrontal Cortical Binding in Major Depression and Suicide

J. John Mann, MD; Yung-yu Huang, MS; Mark D. Underwood, PhD; Suham A. Kassir, MS; Sara Oppenheim, PhD; Thomas M. Kelly, PhD; Andrew J. Dwork, MD; Victoria Arango, PhD

**Background:** Major depression and suicide are associated with fewer serotonin transporter (5-HTT) sites. The 5'-flanking promoter region of the 5-HTT gene has a bi-allelic insertion/deletion (5-HTTLPR). We assayed prefrontal cortical (PFC) 5-HTT binding in major depression and suicide and examine the relationship to the 5-HTTLPR allele.

**Methods:** Postmortem brain samples from 220 individuals were genotyped for the 5-HTTLPR polymorphism. Binding of 5-HTT was assayed by quantitative autoradiography in the PFC of a subset of subjects (n=159). Clinical information, including *DSM-III-R* Axis I diagnoses, was obtained by psychological autopsy and medical chart review.

**Results:** Binding to 5-HTT was lower in the ventral PFC of suicides compared with nonsuicides and was

lower throughout the PFC of subjects with a history of major depression. The 5-HTTLPR genotype was associated with major depression but not with suicide or 5-HTT binding.

**Conclusions:** A diffuse reduction of 5-HTT binding in the PFC of individuals with major depression may reflect a widespread impairment of serotonergic function consistent with the range of psychopathologic features in major depression. The localized reduction in 5-HTT binding in the ventral PFC of suicides may reflect reduced serotonin input to that brain region, underlying the predisposition to act on suicidal thoughts. The 5-HTTLPR genotype was not related to the level of 5-HTT binding and does not explain why 5-HTT binding is lower in major depression or suicide.

*Arch Gen Psychiatry.* 2000;57:729-738

**M**AJOR DEPRESSION<sup>1-25</sup> and suicidal behavior<sup>16,26-46</sup> are independently related to altered serotonergic system indices in the brain, cerebrospinal fluid (CSF), and platelets.<sup>47-51</sup> Two questions arise: Do serotonergic abnormalities in major depression involve different brain regions compared with the diathesis for suicide? Second, what factors cause these alterations in serotonergic function? Genetic factors partly explain the risks for major depression<sup>52</sup> and for suicide.<sup>53,54</sup> It is not known which genes are involved. Candidate genes that warrant investigation are those related to the serotonergic system. Genetic factors affect serotonergic activity, as indicated by the heritability of CSF levels of 5-hydroxyindoleacetic acid in nonhuman primates<sup>55</sup> and the reported association of suicidal acts and serotonergic indices, such as CSF levels of 5-hydroxyindoleacetic acid and the prolactin response to fenfluramine hydrochloride therapy, with an intronic poly-

morphism in the gene for tryptophan hydroxylase.<sup>56-59</sup> The most widely reported serotonergic abnormality in major depression and suicide involves the serotonin transporter (5-HTT).<sup>51</sup> Fewer platelet 5-HTT sites and reduced platelet serotonin uptake have been reported.<sup>49,51</sup> Both functional imaging and postmortem brain studies indicate less 5-HTT binding in the brain in depressed patients.<sup>60,61</sup> Because platelet 5-HTT binding seems to be unrelated to levels of brain 5-HTT binding,<sup>51,61</sup> direct studies of the brain are necessary to determine the state of 5-HTT binding in major depression.

*See also page 739*

A preliminary study<sup>46</sup> of suicides reported that changes in 5-HTT and 5-HT<sub>1A</sub> binding are localized to the ventral prefrontal cortex (PFC), an area involved in behavioral inhibition and, therefore, the potential location of a diathesis for suicidal behavior. Impulsive, aggressive behaviors are more common in suicide at-

*From the Mental Health Clinical Research Center for the Study of Suicidal Behavior, Department of Neuroscience, New York State Psychiatric Institute, and the Department of Psychiatry, Columbia University College of Physicians and Surgeons, New York, NY.*

## SUBJECTS, MATERIALS, AND METHODS

### SUBJECTS

All cases (N=220) had a postmortem delay of less than 24 hours and had died without a prolonged agonal period. Next of kin consented to assay of the tissue and review of relevant medical and forensic records. With informed consent, 1 or more informants per case agreed to an interview for the purpose of a psychological autopsy. The protocol was approved by the relevant institutional review boards. Cause of death was determined by the Allegheny County, Pa, coroner (n=105) or the New York, NY, medical examiner (n=115). Suicide required evidence of intent and a self-inflicted fatal act. Nonsuicide controls were selected based on suicide not being the manner of death. Cases of uncertain manner of death were excluded. Subjects were diagnosed according to *DSM-III-R* criteria based on all available information from results of a psychological autopsy performed an average of 5.5 months after death according to a previously reported method,<sup>79</sup> coroner's or medical examiner's records, hospital records, and police reports. Psychological autopsy interviews were conducted by trained staff: a psychiatric social worker (T.M.K.) or a psychologist (S.O.). The diagnosis was made in conjunction with a psychiatrist (J.J.M.). We validated the psychological autopsy results for Axis I and Axis II disorders. We used the Structured Clinical Interview I and II for diagnosis, the Suicide History Form (Columbia University, New York, NY) for past suicidal acts, the Brown Goodwin Aggression History Scale for lifetime aggression, and a checklist for demographic data and other clinical details. The review of hospital records was done by an experienced psychiatrist (J.J.M.) using a checklist of criteria for *DSM-III-R* diagnoses. A diagnosis of alcoholism was based on the psychological autopsy and autopsy findings, such as cirrhosis combined with a blood or brain alcohol level greater than 0.15%. A history of pathological aggression was defined as a history of aggression resulting in arrest, major property damage, or injury to another individual that required medical attention or was fatal.

The 220 cases (**Table 1**) included 82 people who had committed suicide and 138 nonsuicide controls. Subjects were divided clinically as follows: a definite lifetime history of major depressive episode either bipolar or unipolar (n=53), definitely no lifetime history of a major depressive episode (n=107), and indeterminate (n=60); a definite history of alcoholism or substance abuse (n=86), definitely no history of alcoholism or substance abuse

(n=83), and indeterminate (n=51); and a definite history of pathological aggression (n=38), a definite history of no pathological aggression (n=92), and indeterminate (n=90). All indeterminate individuals were omitted from the applicable analyses. Other major diagnoses included schizophrenia (27%), schizophreniform reaction or schizoaffective disorder (12%), dysthymia (1%), and bipolar disorder (2%). All subjects had toxicologic screening of blood, urine, and bile and a clinical history. Most subjects had brain toxicologic screening for selected psychotropic drugs and alcohol (28% had positive brain screen results in the face of negative results of peripheral body fluid screening) to ensure drug-free status. Drugs screened for included benzodiazepines, tricyclics, antipsychotics, most drugs of abuse, lithium, trazodone hydrochloride, bupropion hydrochloride, selective serotonin reuptake inhibitors, amphetamine sulfate, caffeine, and alcohol. Other than drugs for medical conditions, results were as follows: positive screening results included benzodiazepines (n=6), cocaine/benzoylcochine (n=10), opiates (n=14), carbon monoxide (n=11), antipsychotics (n=2), caffeine (n=3), antidepressants (n=6), lithium (n=3), barbiturates (n=2), cannabis (n=5), and antihistamines (n=5). Some cases had more than 1 positive drug test result, and any cases with monoaminergic-related drugs did not have 5-HTT binding assayed. Subjects with evidence of a neurologic disorder on history or at autopsy were excluded.

We compared 162 cases who had complete psychological autopsies with 58 cases where sources of data were limited to the medical examiner's toxicologic and autopsy results, police reports, calls to physicians, and available hospital records. No differences were found in terms of genotype; age; postmortem interval to autopsy; 5-HTT binding; race, sex ratio; and rates of major depression, alcoholism, or pathological aggression. We also compared 159 cases who had 5-HTT binding assayed with 61 who did not. No differences were found except for a lower rate of major depression (112 of 159 vs 24 of 61;  $\chi^2_3=18.8$ ,  $P<.001$ ) and a higher rate of whites (28 of 103 vs 25 of 57;  $\chi^2_1=4.6$ ,  $P=.03$ ) in the group that had 5-HTT assayed. Therefore, it is likely that results found in cases with a complete psychological autopsy are relevant for cases without, and cases with 5-HTT binding closely resemble cases without 5-HTT binding.

Race distribution in the whole population was 136 whites, 28 Hispanics, 49 African Americans, and 7 Asians. Suicide cases differed from nonsuicide controls in race composition ( $\chi^2_3=9.8$ ;  $P=.02$ ) because of fewer African Americans (9 of 82 vs 40 of 138). There were more African Americans in the group without depression (30 of 107 compared with 5 of 53,  $\chi^2_3=8.4$ ;  $P=.04$ ).

tempters,<sup>62-65</sup> consistent with a common diathesis. We hypothesized that ventral PFC dysfunction underlies the diathesis for impulsive aggression and suicide.<sup>64</sup> Major depression involves more diverse psychopathologic features, suggesting involvement of more brain areas than only the ventral PFC.

A 44-base pair (bp) deletion/insertion polymorphism (5-HTTLPR) in the 5' flanking regulatory region of the human 5-HTT gene results in differential expression of 5-HTT and serotonin reuptake in transformed

lymphoblastoid cell lines.<sup>66</sup> The short form of the 5-HTTLPR locus is associated with 40% fewer binding sites in the homozygote (SS) and the heterozygote (SL) compared with the long form (LL). Therefore, fewer 5-HTT sites on platelets of depressed patients, and fewer 5-HTT sites in the PFC of suicides, may be because of an association of the short 5-HTTLPR allele with major depression or suicide.

Results of studies<sup>67-71</sup> disagree regarding an association of the 5-HTTLPR genotype with mood disorders.

## TISSUE COLLECTION AND PREPARATION

Autoradiographic receptor assays of coronal sections of PFC were conducted on 159 cases selected based on toxicologic findings and tissue availability. Our tissue collection and preparation procedures have been detailed previously.<sup>46,80</sup> Coronal serial sections (20  $\mu$ m) (n=150) were taken from generally the right hemisphere, just anterior to the genu of the corpus callosum, and thaw-mounted onto 7.6  $\times$  12.7-cm gelatin-subbed, acid-cleaned glass slides. An intercalating set (every 200  $\mu$ m) was stained for Nissl substance for anatomical reference. Two adjacent sections (every 1000  $\mu$ m) (n=6) per brain were used for each receptor assay. Tissue sections were desiccated and stored in sealed boxes at  $-20^{\circ}\text{C}$  for 24 hours and at  $-80^{\circ}\text{C}$  thereafter.

## AUTORADIOGRAPHIC BINDING ASSAY

Details of this assay are provided in Arango et al.<sup>46</sup>

### <sup>3</sup>H-Cyanoimipramine Binding

Sections were preincubated for 30 minutes at  $23^{\circ}\text{C}$  in 50-mmol/L Tris-hydrochloride buffer with 130-mmol/L sodium chloride and 5-mmol/L potassium chloride (pH 7.4). Total binding was determined by incubation ( $4^{\circ}\text{C}$ ) in the same buffer containing 0.4-nmol/L <sup>3</sup>H-cyanoimipramine for 24 hours. Nonspecific binding was defined by coincubation of adjacent sections with 1- $\mu$ mol/L sertraline hydrochloride (modification of Kovachich et al<sup>81</sup>). Nonspecific binding was less than 20% of total binding. Sections were washed in cold buffer for 1 hour ( $3 \times 20$  minutes). Following the washes, the slides were dipped in distilled water ( $4^{\circ}\text{C}$ ) and the tissue was dried with cold, filtered air and vacuum desiccated overnight at  $4^{\circ}\text{C}$ . Dried sections were arranged in x-ray cassettes along with tritium standards and exposed to <sup>3</sup>H-sensitive film for 17 to 20 weeks. At the end of the exposure period, the films were developed.

### Quantitation of Autoradiograms

Autoradiograms were analyzed using a PC-based image analysis system (MCID; Imaging Research Inc, Hamilton, Ontario). Films were digitized, shade-corrected, and calibrated against tritium standards. Binding to the 5-HTT in the cortical gray matter was mostly bilaminar. We report specific binding over the entire thickness of the gray matter (layers I-VI). Brodmann areas 8, 9, 46, 45, 47, 11, 12, 32, and 24 were identified using gyral and sulcal landmarks, cytoarchitecture, and a standardized coronal atlas (Robert Perry, MD, and Edward Bird, MD, written communication, 1985; available on request). We selected areas to analyze for this study as representative of lateral (46), dorsal (9), and ventral (45 and 47)

PFC. We used subtracted images to measure specific binding, in femtomoles per milligram of tissue, in gyrus and sulcus separately for each Brodmann area. Standards were corrected daily for radioactive decay. All samples were coded so that laboratory staff were masked to the diagnosis during assays and analyses.

## GENOTYPING

All subjects included in the study underwent genotyping. DNA was extracted from frozen brain tissue (150-200 mg) according to a previously published method.<sup>82</sup> We used a modification of the amplification protocol of Lesch et al.<sup>66</sup> Briefly, oligonucleotide primers flanking the 5-HTTLPR 5'GGCGTTGCCGCTCTGAATGC-3' (-1416 to -1397) and 5'-GAGGGGACTGAGCTGGACAACCAC-3' (-910 to -888) were used to produce 484- or 528-bp fragments. Polymerase chain reaction was carried out in a final volume of 25  $\mu$ L containing 50 ng of genomic DNA, 100 ng of each primer, 50-mmol/L potassium chloride, 10-mmol/L Tris-hydrochloride (pH 8.3), 1.5-mmol/L magnesium chloride, 0.01% gelatin, 2.5 mmol/L of each deoxynucleotide triphosphate (deoxyguanosine triphosphate [dGTP]/7-deaza-2'-dGTP and dGTP equal amount), and 0.8 U of AmpliTaq DNA polymerase (Promega, Madison, Wis). Two microliters of  $\alpha$ -phosphorus 32-labeled deoxycytidine triphosphate (111 TBq/mmol New England Nuclear, Du Pont, Boston, Mass) was added to the cocktail mixture. Samples were processed in a polymerase chain reaction system (GeneAmp PCR System 2400; Perkin-Elmer PE-Biosystems, Foster City, Calif). A modified quick hot start was devised by initial heating of the instrument to  $94^{\circ}\text{C}$ . After placement of the tubes into the thermoblock, the reaction was proceeded to denature for an additional 5 minutes. Thirty-five temperature cycles were carried out, consisting of 30 seconds at  $94^{\circ}\text{C}$ , 30 seconds at  $61^{\circ}\text{C}$ , and 40 seconds at  $72^{\circ}\text{C}$ , followed by a final extension step of  $72^{\circ}\text{C}$  for 7 minutes. Electrophoresis was carried out in a 6% non-denatured polyacrylamide gel (19:1) at room temperature for 16 hours at 100 V. The gels were dried and bands were visualized by autoradiography.

## STATISTICS

For continuous variables we used analysis of variance and multiple regression analyses. For nominal variables such as genotype and diagnosis, we used contingency tables; where both types of variables were used to predict group membership, logistic regression was used. Results are reported as mean  $\pm$  SD. Differences were considered significant at  $P < .05$  (2 tailed).

However, none of these studies measured 5-HTT binding in the same subjects. Aggressive and impulsive traits, alcoholism, and substance abuse all carry an elevated risk of suicide and are also associated with serotonergic abnormalities.<sup>72,73</sup> There is disagreement about whether the 5-HTTLPR genotype is associated with harm avoidance temperament,<sup>66</sup> alcoholism,<sup>74-76</sup> anxiety, or impulsive traits.<sup>77,78</sup>

We report the first study to examine the relationship of the 5-HTTLPR genotype to PFC 5-HTT binding, major depression, and suicide. Antemortem psychiatric

state was assessed and 5-HTT binding was assayed in multiple areas of the PFC by autoradiography on slide-mounted sections.

## RESULTS

### CLINICAL AND DEMOGRAPHIC FEATURES

Age and postmortem delay did not differ significantly between suicides and nonsuicide controls or between those

**Table 1. Demographic and Clinical Features of the Study Population (N = 220)**

	Lifetime Major Depression Status Known (n = 160)*		Suicides (n = 82)	Nonsuicide Controls (n = 138)
	History (n = 53)	No History (n = 107)		
Age, mean ± SD, y	44 ± 20	42 ± 17	43 ± 20	42 ± 16
Sex, M/F, No.	37/16†	91/16	61/21	107/31
Race, white/Hispanic/black/Asian, No.	40/7/5/1‡	58/16/30/3	59/11/9/3§	77/17/40/4
Postmortem delay, mean ± SD, h	17 ± 6	16 ± 6	16 ± 6	16 ± 6
Major depression history, yes/no, No.	53	107	43/20	10/87
Alcoholism or substance abuse history, yes/no/indeterminate, No.	21/31¶/1	58/48/1	29/35/18	58/48/32
History of assaultive aggression, yes/no/indeterminate, No.	14/32/7	31/69/7	23/36#/23	25/67/46

\*Lifetime major depressive status was indeterminate for 60 individuals.

†Sex ratio in major depression:  $\chi^2_1 = 5.1$ ;  $P = .02$  (relatively more women with major depression).

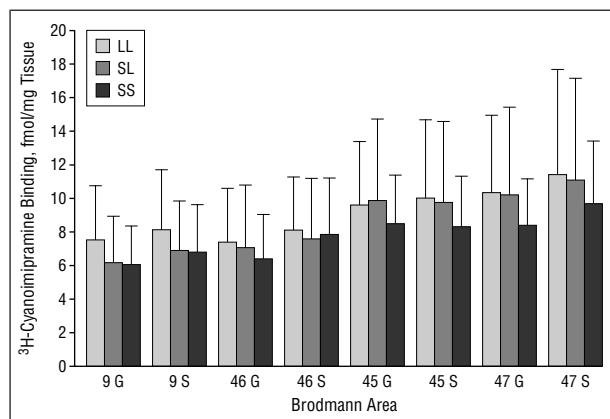
‡Major depression vs no major depression:  $\chi^2_3 = 8.4$ ;  $P = .04$ .

§Suicide vs nonsuicide:  $\chi^2_3 = 9.8$ ;  $P = .02$ .

||Rate of major depression in suicides vs nonsuicide controls:  $\chi^2_1 = 57.9$ ;  $P < .001$ . The denominator is less than the total for either suicides or nonsuicide controls because we could not rule in or rule out depression in all cases. The same applies to alcoholism and substance abuse or aggression.

¶Rate of alcoholism in suicides vs nonsuicide controls ( $\chi^2_1 = 1.4$ ;  $P = .23$ ) and in individuals with vs without major depression ( $\chi^2_1 = 2.9$ ;  $P = .09$ ).

#Rate of pathological aggression in suicides vs nonsuicide controls:  $\chi^2_1 = 2.3$ ;  $P = .13$ .



**Figure 1.** Mean ± SD serotonin transporter (5-HTT) binding in Brodmann areas in the prefrontal cortex subdivided by sulcus (S) and gyrus (G): comparison of 5-HTTLPR genotypes. SS indicates short form of the 5-HTTLPR locus in the homozygote (n=33); SL, short and long form of the 5-HTTLPR locus in the heterozygote (n=74); and LL, long form of the 5-HTTLPR locus (n=48).

with vs without a history of major depression (Table 1). Men outnumbered women in the overall sample by about 3:1 (168 men and 52 women), but the proportions were similar across the subgroups of those with and without suicide, alcoholism, substance abuse, or pathological aggression. However, there were relatively more women in the major depression group ( $\chi^2_1 = 5.1$ ;  $P = .02$ ). Rates of a history of pathological aggression or alcoholism or substance abuse did not distinguish suicides or the group with a history of major depression. There was a strong association of suicide and major depression. In a logistic regression in which suicide was the dependent variable and sex, major depression, and pathological aggression were independent variables, major depression correlated with suicide ( $\chi^2_1 = 39.2$ ;  $P < .001$ ). None of the other variables were independently significant correlates of suicide, although aggression showed a trend ( $\chi^2_1 = 2.77$ ;  $P = .10$ ). Aggression cor-

related with alcoholism and substance abuse ( $\chi^2_1 = 22.5$ ;  $P < .001$ ).

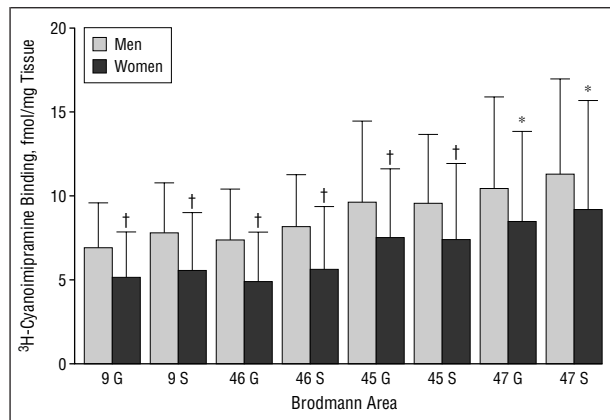
#### RELATIONSHIP BETWEEN REGIONAL PFC 5-HTT BINDING AND GENOTYPE

No effect of genotype on 5-HTT binding in the PFC was apparent in any of the Brodmann areas (**Figure 1**). Lesch et al<sup>66</sup> reported that the LL genotype differs from the SL and SS genotypes in having 40% more 5-HTT binding sites in transformed lymphoblastoid cells. However, we found that the LL group did not differ significantly in 5-HTT binding from the combined SL and SS groups, and the SL and SS genotypes did not differ in 5-HTT binding from each other. Moreover, controlling for a history of major depression or sex made no difference to the result.

#### SEX EFFECTS AND PFC 5-HTT BINDING AND GENOTYPE

Women had lower 5-HTT binding compared with men in most Brodmann areas studied (**Figure 2**). The mean difference was 25.4% (range, 18.0%-34.0%). This effect was confirmed in a logistic regression model in which all brain regions were compacted as repeated measures into a single independent variable and sex was a dependent variable ( $\chi^2 = 46.8$ ;  $P < .001$ ). The sex difference was statistically significant in all Brodmann areas within the LL genotype (women < men) (data not shown). Although sex contrasts were not statistically significant within the other genotypes, this was possibly because of the smaller sample sizes. No association of genotype and sex was found ( $\chi^2_2 = 1.96$ ;  $P = .38$ ). We found a significant effect for sex on 5-HTT binding to the gyrus of Brodmann area 9 ( $F_{1,49,2} = 8.341$ ;  $P < .001$ ), but no effect of genotype ( $P = .80$ ) and no significant interaction effect ( $P = .54$ ). Results in other Brodmann areas were similar. Postmortem delay and age did not correlate with 5-HTT binding (data not shown).



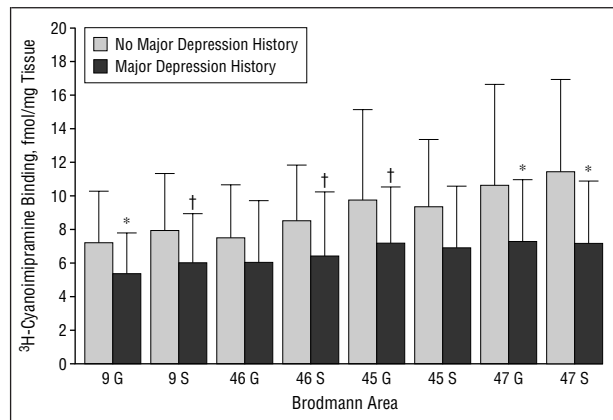


**Figure 2.** Mean  $\pm$ SD serotonin transporter (5-HTT) binding in Brodmann areas in the prefrontal cortex subdivided by sulcus (S) and gyrus (G): comparison of men ( $n=124$ ) and women ( $n=35$ ). Asterisk indicates  $P<.1$ ; dagger,  $P<.01$  (both by analysis of variance).

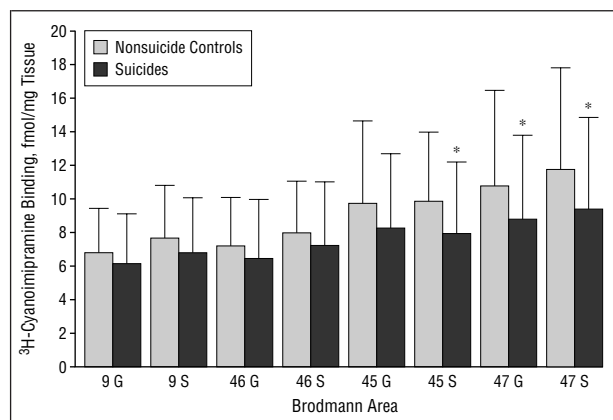
### RELATIONSHIP OF PFC 5-HTT BINDING TO MAJOR DEPRESSION, SUICIDE, AND OTHER PSYCHOPATHOLOGIC DISORDERS

Binding of 5-HTT to the PFC of patients with a history of major depression was significantly lower in the gyrus and sulcus of most Brodmann areas compared with those without a history of major depression (**Figure 3**). The mean difference across brain regions was 35% (range, 23%-63%). Mean reduction in binding in men with vs without depression was 33% (range, 17%-65%) in contrast to depressed vs nondepressed women (19%; range, 10%-26%). More women had a history of major depression (Table 1), and women had lower 5-HTT binding than men. Moreover, suicide was associated with major depression (Table 1) and lower 5-HTT binding. Therefore, to determine whether lower 5-HTT binding was associated with major depression, independently of sex and suicide, we included sex, suicide status, and binding together in a single logistic regression model. All were independent significant correlates of major depression ( $P<.001$  for 5-HTT binding to all brain regions as a single compact variable, suicide, and sex), and the overall model was highly significant ( $\chi^2=14.1$ ,  $P<.001$ ).

In contrast to major depression, 5-HTT binding to the PFC of suicides was lower only in the orbital or ventral PFC (18% lower in Brodmann areas 45 and 47) (**Figure 4**) compared with nonsuicide controls. Because of the higher rate of suicide in cases with a history of major depression (Table 1), and the association of lower 5-HTT binding to major depression, we examined the interrelationship of major depression and suicide to 5-HTT binding in the PFC. Within the group with a history of major depression, suicides had lower 5-HTT binding than nonsuicide controls ( $6.5 \pm 3.5$  vs  $8.4 \pm 1.2$ ,  $F=4.88$ ;  $P=.03$ ). In the group without major depression, suicides did not differ from nonsuicides ( $F=1.93$ ;  $P=.17$ ). An analysis of variance that included sex and suicide groups as independent variables and 5-HTT binding to the ventral PFC (a single compacted variable based on data from Brodmann areas 45 and 47) as the dependent variable confirmed that the effect of suicide ( $F_{151,1}=19.3$ ;  $P<.001$ ) on binding was independent of sex ( $F=18.9$ ;  $P<.001$ ). Bind-



**Figure 3.** Mean  $\pm$ SD serotonin transporter (5-HTT) binding in Brodmann areas in the prefrontal cortex subdivided by sulcus (S) and gyrus (G): comparison of 5-HTT binding in subjects with ( $n=29$ ) vs without ( $n=71$ ) a history of major depression. Asterisk indicates  $P<.01$ ; dagger,  $P<.05$  (both by analysis of variance).



**Figure 4.** Mean  $\pm$ SD serotonin transporter (5-HTT) binding in Brodmann areas in the prefrontal cortex subdivided by sulcus (S) and gyrus (G): comparison of suicides ( $n=60$ ) and those dying of other causes ( $n=99$ ). Asterisk indicates  $P<.05$  by analysis of variance.

ing of 5-HTT was not different in those with vs without a history of pathological aggression or alcoholism or substance abuse (data not shown).

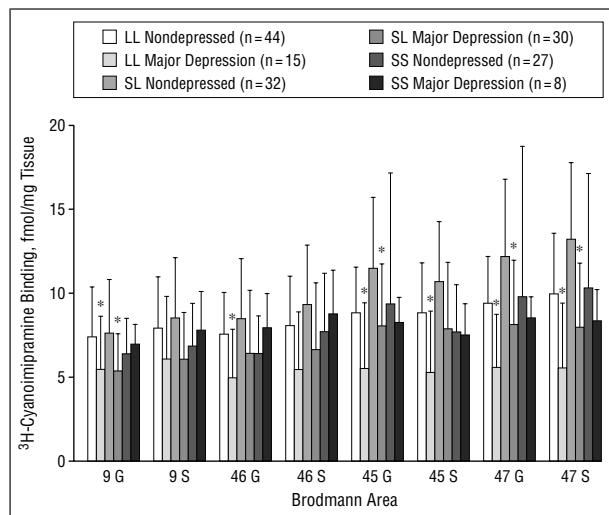
### RELATIONSHIP OF 5-HTTLPR GENOTYPE TO SUICIDE, MAJOR DEPRESSION, AND OTHER PSYCHOPATHOLOGIC DISORDERS

Allelic frequencies for the L allele were .580 and .570, and for the S allele .420 and .430 in the subjects with and without major depression, respectively, and did not significantly differ ( $\chi^2_1=0.02$ ;  $P=.87$ ). A statistically significant association of genotype with a history of major depression was found ( $\chi^2_2=9.6$ ;  $P=.008$ ) (**Table 2**), with a relatively higher rate of heterozygotes in the group with a history of major depression. However, departure from Hardy-Weinberg Equilibrium examined by a  $\chi^2$  test indicated that there was no difference in the observed frequencies of genotypes compared with predicted frequency in the groups with and without major depression. Allelic frequencies for L were .524 and .582, and for the S allele .476 and .418 in the subjects with and without a

**Table 2. Observed Frequencies for Serotonin Transporter Promoter (5-HTTLPR) Genotypes in Subjects With vs Without Major Depression\***

Genotype	Subjects, No.		Total
	Without Depression	With Depression	
LL	44	15	59
SL	32	30	62
SS	27	8	35
<b>Total</b>	<b>103</b>	<b>53</b>	<b>156</b>

\* $\chi^2 = 9.6$ ;  $P = .008$  (data are missing for 5 individuals for technical reasons, including 4 with known data on the presence or absence of major depression).



**Figure 5.** Mean  $\pm$  SD serotonin transporter (5-HTT) binding in Brodmann areas in prefrontal cortex subdivided by sulcus (S) and gyrus (G): comparison of those with (n=29) vs without (n=71) a history of major depression within subgroups defined by 5-HTTLPR genotype. Asterisk indicates  $P < .05$  by analysis of variance; SS, short form of the 5-HTTLPR locus in the homozygote; SL, short and long form of the 5-HTTLPR locus in the heterozygote; and LL, long form of the 5-HTTLPR locus.

history of suicide, respectively ( $\chi^2_1 = 1.15$ ;  $P = .28$ ). Genotype was not associated with suicide ( $\chi^2_1 =$ ;  $P = .53$ ). Genotype distribution and allelic frequency also did not differ depending on a history of alcoholism, substance abuse, or pathological aggression (data not shown).

#### 5-HTTLPR GENOTYPE AND LOWER 5-HTT BINDING IN MAJOR DEPRESSION AND SUICIDE

To determine whether the lower 5-HTT binding in the group with a history of major depression is explained by genotype, we used dummy variables for nominal variables in the regression analysis: for genotype, SS=2, SL=1, and LL=0; and presence of major depressive episode=1 and absence of major depressive episode=0. A diagnosis of major depressive episode was a significant correlate of binding ( $P = .002$ ), whereas genotype was not ( $P = .24$ ). **Figure 5** illustrates how 5-HTT binding is lower in major depression independent of genotype. Suicide was associated with lower 5-HTT binding in Brodmann area 47 of the ventral PFC ( $F_{1,146} = 4.9$ ;  $P = .03$ ), and in the same

region 5-HTT binding was independent of 5-HTT genotype ( $F_{2,146} = 1.131$ ;  $P = .33$ ). There was no significant interaction.

#### COMMENT

This study, the most comprehensive postmortem study of major depression and suicide thus far, to our knowledge, found that postmortem 5-HTT binding is lower throughout the dorsal-ventral extent of the PFC in individuals with a history of major depression. Previous studies report less 5-HTT binding in the occipital cortex of depressed patients dying of causes other than suicide<sup>60</sup> and less 5-HTT binding in vivo in the midbrain of depressed patients.<sup>61</sup> Hence, the reduction in 5-HTT binding associated with major depression involves the brainstem and several cortical regions. Negative results were reported by Ferrier et al<sup>83</sup> in a small series of elderly depressed patients but with a long postmortem delay.

We also replicated a previous study<sup>46</sup> of lower 5-HTT binding localized to the ventral PFC of suicides. Most, but not all, studies<sup>31-35,40-43,46,84,85</sup> of suicides found a reduction in 5-HTT binding, although 1 study<sup>36</sup> found an increase and 4 studies<sup>37-39,86</sup> found no change in the PFC. Negative findings might be a consequence of looking at the “wrong” brain region. Moreover, previous studies lacked information as to which suicide or nonsuicides had a history of major depression and could not distinguish effects of the two disorders.

Because we used 0.4-nmol/L <sup>3</sup>H-cyanoimipramine, approximately 3½ times its reported  $K_D$  in rat brain,<sup>81</sup> our results most likely reflect differences in the number of binding sites and not affinity. Previous postmortem and platelet studies<sup>35,40,46,51</sup> have reported that differences in 5-HTT binding in depression or suicide are because of fewer binding sites or  $B_{max}$ , and not altered  $K_D$ .

Alterations in 5-HTT binding specifically related to suicide risk, as opposed to major depression, were concentrated in the ventral PFC.<sup>46</sup> Acquired ventral PFC injuries are associated with disinhibition and an increase in impulsive behaviors, including aggression and suicide attempts.<sup>87,88</sup> Therefore, reduced serotonergic input into this brain region might underlie an impairment of behavioral inhibition or restraint and an increased propensity for suicidal acts in patients who feel depressed or hopeless.

We found that the short 5-HTTLPR allele was not more frequent in major depression, and unlike studies<sup>66</sup> in transformed lymphoblastoid cell lines, the S allele was not associated with less 5-HTT binding in the brain. Hence, it does not seem to explain why 5-HTT binding is lower in major depression. Perhaps regulatory mechanisms governing gene expression and 5-HTT binding sites in intact brain differ from transformed cell lines and dampen potential differences in the number of 5-HTT binding sites in the brain.

There are 16 studies<sup>67-71,85,89-98</sup> examining linkage or association between the 5-HTTLPR locus and mood disorders in a variety of unipolar and bipolar samples from several ethnic groups. Only 4 of 16 studies are positive,<sup>70,71,85,90</sup> and 1 of the positive studies<sup>85</sup> found an association between depressed suicides and the long form

of the 5-HTTLPR polymorphism (the opposite of the hypothesized relationship). We did find an association, explained by a higher rate of heterozygotes in the major depressive disorder group. Therefore, it is unclear whether this locus is associated with mood disorders. Our postmortem brain results suggest that even if this locus were associated with mood disorders, it does not directly explain the difference in PFC 5-HTT binding. Other brain<sup>85</sup> and platelet<sup>98</sup> studies have produced conflicting results. In vivo studies<sup>51,61</sup> suggest a systemic reduction in 5-HTT sites in major depression, a finding consistent with a genetic or systemic effect. Increased corticosteroid secretion is associated with more severe depression,<sup>99-101</sup> but animal studies<sup>102</sup> do not suggest an effect on 5-HTT gene expression or binding. Other promoter region variants, alterations in transcription factors, and possible functional variation of different 5-HTT transcripts await further study.<sup>103-105</sup>

We did not find an association of the 5-HTTLPR polymorphism and suicide, and it has been little studied in the literature. Nevertheless, the reduction in 5-HTT binding localized to the orbital PFC in suicides in our study seems unrelated to the 5-HTTLPR locus.

Women have less 5-HTT binding in the PFC than men,<sup>46</sup> and we replicated this finding. Reduced gene expression in association with the S allele does not explain fewer binding sites in women. Our finding of no association of 5-HTTLPR genotype with sex agrees with results of other studies.<sup>92,106-108</sup> Paradoxically, estradiol therapy increases the expression of the 5-HTT gene and the number of 5-HTT binding sites in several brain regions.<sup>109-111</sup> However, in a postmortem human brain study, Hernandez and Sokolov<sup>112</sup> found no association between 5-HTT messenger RNA levels and sex. Therefore, the mechanism underlying the sex differences in 5-HTT binding remains unknown. Less 5-HTT binding in the PFC of women is in the same direction, and has the same brain distribution, as lower 5-HTT binding in major depression and therefore may be related to the higher rate of major depression in women.<sup>113</sup>

Binding of 5-HTT might be affected by psychotropics, particularly antidepressants, administered antemortem. Our study, and at least 2 others,<sup>43,86</sup> excluded individuals with recent antemortem antidepressant use. Other studies did not exclude such individuals. Results of human platelet and rodent studies<sup>51,114</sup> disagree as to whether tricyclic antidepressants or selective serotonin reuptake inhibitors alter transporter binding or gene expression in an enduring fashion after long-term administration. Nemeroff et al<sup>115</sup> found that platelet 5-HTT binding was reduced in never-medicated depressed patients, evidence that past medication does not explain these results.

We did not find an alteration in 5-HTT binding to the PFC or an association of genotype with alcoholism or substance abuse or with a history of pathological aggression. Alcoholism, impulsive homicide, and arson are associated with lower CSF 5-hydroxyindoleacetic acid levels.<sup>116-120</sup> Less 5-HTT binding is reported in the brainstem of impulsively violent offenders<sup>121</sup> and alcoholics.<sup>122</sup> Little et al<sup>123</sup> found higher 5-HTT binding in postmortem tissue of individuals with the LL genotype but also higher 5-HTT binding in alcoholics with the

S allele. These results seem contradictory and might be an artifact of a small sample size. We did not study brainstem 5-HTT binding, and CSF 5-hydroxyindoleacetic acid is a measure of overall serotonin turnover and not 5-HTT binding. Therefore, different results might reflect use of different indices of serotonergic function. Alternatively, the psychological autopsy method may be insufficiently sensitive for diagnoses such as alcoholism, substance abuse, or a lifetime history of pathological aggression.

Results of several studies<sup>66,74-77</sup> disagree regarding the relationship of the 5-HTTLPR locus to alcoholism or harm avoidance, but data are lacking regarding criminal, impulsive aggression. Studies of impulsive, pathological, or criminal aggression and the 5-HTTLPR locus would be of interest.

This study has limitations. The sample size is large relative to previous studies, but, unavoidably, subsamples were small, increasing the risk of type I and type II errors. Replication of these results is needed. The psychological autopsy method could not always determine whether subjects had major depression at the time of death. This might not matter because a serotonergic abnormality seems to be present in patients between episodes of major depression.<sup>25,124</sup> We had insufficient data to distinguish impulsive from nonimpulsive aggression. That distinction might be important because studies<sup>125</sup> suggest that only impulsive violence is associated with reduced serotonergic function.

This study found lower 5-HTT binding in the dorsal-ventral extent of the PFC of deceased individuals with a history of major depression and confirmed a reduction in 5-HTT binding involving the orbital PFC of suicides. A promoter region insertion/deletion in the gene for the 5-HTT (5-HTTLPR) did not explain lower PFC 5-HTT binding in major depression, suicide, or women.

Accepted for publication March 7, 2000.

This work was supported by grants MH46745, MH40695, MH40210, and AA09004 from the Public Health Service; The Diane Goldberg Foundation; and The Audrey Wallace Otto Fund of the St Louis Community Foundation.

We thank the families who participated in these studies and the staff of the New York City Medical Examiner's Office for their help. Victor Arkhipov, MD, PhD, Mihran J. Bakalian, BA, Vadim Khait, PhD, and Alexei Kartachov, MD, provided technical assistance. The manuscript was expertly typed by Nancy Geibel.

Reprints: J. John Mann, MD, Department of Neuroscience, New York State Psychiatric Institute, 1051 Riverside Dr, Box 42, New York, NY 10032.

## REFERENCES

1. Åsberg M, Bertilsson L, Martensson B, Scalia Tomba GP, Thorén P, Träskman-Bendz L. CSF monoamine metabolites in melancholia. *Acta Psychiatr Scand*. 1984;69:201-219.
2. Ashcroft GW, Crawford TBB, Cundall RL, Davidson DL, Dobson J, Dow RC, Eccleston D, Loose RW, Pullar IA. 5-Hydroxytryptamine metabolites in affective illness: the effect of tryptophan administration. *Psychol Med*. 1973;3:326-332.
3. Gerner RH, Fairbanks L, Anderson GM, Young JG, Scheinin M, Linnoila M, Hare TA, Shaywitz BA, Cohen DJ. CSF neurochemistry in depressed, manic, and schizophrenic patients compared with that of normal controls. *Am J Psychiatry*. 1984; 141:1533-1540.



4. Koslow SH, Maas JW, Bowden CL, David JM, Hanin I, Javaid J. CSF and urinary biogenic amines and metabolism in depression and mania: a controlled univariate analysis. *Arch Gen Psychiatry*. 1983;40:999-1010.
5. Mendels J, Frazer A, Fitzgerald RG, Ramsey TA, Stokes JW. Biogenic amine metabolites in cerebrospinal fluid of depressed and manic patients. *Science*. 1972;175:1380-1382.
6. Redmond DE, Katz MM, Maas JW, Swann A, Casper R, Davis JM. Cerebrospinal fluid amine metabolites. *Arch Gen Psychiatry*. 1986;43:938-947.
7. Roy A, Pickar D, Linnoila M, Doran AR, Ninan P, Paul SM. Cerebrospinal fluid monoamine and monoamine metabolite concentrations in melancholia. *Psychiatry Res*. 1985;15:281-292.
8. van Praag HM, de Haan S. Central serotonin metabolism and frequency of depression. *Psychiatry Res*. 1979;1:219-224.
9. Sjöström R, Roos B-E. 5-Hydroxyindolacetic acid and homovanillic acid in cerebrospinal fluid in manic-depressive psychosis. *Eur J Clin Pharmacol*. 1972;4:170-176.
10. Ashcroft GW, Blackburn IM, Eccleston D, Glen AIM, Harley W, Kinloch NE, Lonergan M, Murray LG, Pullar IA. Changes on recovery in the concentrations of tryptophan and the biogenic amine metabolites in the cerebrospinal fluid of patients with affective illness. *Psychol Med*. 1973;3:319-325.
11. Post RM, Goodwin FK. Brain research mechanisms and symptom formation: estimation of brain amine metabolism in affective illness: cerebrospinal fluid studies utilizing probenecid. *Psychother Psychosom*. 1974;23:142-158.
12. Bowers MB Jr. Lumbar CSF 5-hydroxyindoleacetic acid and homovanillic acid in affective syndromes. *J Nerv Ment Dis*. 1974;158:325-330.
13. Goodwin FK, Post RM. Catecholamine metabolite studies in the affective disorders: issues of specificity and significance. In: Usdin E, ed. *Neuroregulators and Psychiatric Disorders*. New York, NY: Oxford University Press Inc; 1977: 135-145.
14. Upadhyaya AK, Pennell I, Cowen PJ, Deakin JFW. Blunted growth hormone and prolactin responses to L-tryptophan in depression: a state-dependent abnormality. *J Affect Disord*. 1991;21:213-218.
15. Coccaro EF, Siever LJ, Klar HM, Maurer G, Cochrane K, Cooper TB, Mohs RC, Davis KL. Serotonergic studies in patients with affective and personality disorders: correlates with suicidal and impulsive aggressive behavior. *Arch Gen Psychiatry*. 1989;46:587-599.
16. Mann JJ, McBride PA, Brown RP, Linnoila M, Leon AC, DeMeo MD, Mieczkowski TA, Myers JE, Stanley M. Relationship between central and peripheral serotonin indexes in depressed and suicidal psychiatric inpatients. *Arch Gen Psychiatry*. 1992;49:442-446.
17. O'Keane V, Dinan TG. Prolactin and cortisol responses to d-fenfluramine in major depression: evidence for diminished responsivity of central serotonergic function. *Am J Psychiatry*. 1991;148:1009-1015.
18. Siever LJ, Murphy DL, Slater S, de la Vega E, Lipper S. Plasma prolactin changes following fenfluramine in depressed patients compared to controls: an evaluation of central serotonergic responsivity in depression. *Life Sci*. 1984;34:1029-1039.
19. Heninger GR, Charney DS, Sternberg DE. Serotonergic function in depression: prolactin response to intravenous tryptophan in depressed patients and healthy subjects. *Arch Gen Psychiatry*. 1984;41:398-402.
20. Price LH, Charney DS, Delgado PL, Heninger GR. Serotonin function and depression: neuroendocrine and mood responses to intravenous L-tryptophan in depressed patients and healthy comparison subjects. *Am J Psychiatry*. 1991;148:1518-1525.
21. Cowen PJ, McCance SL, Gelder MG, Grahame-Smith DG. Effect of amitriptyline on endocrine responses to intravenous L-tryptophan. *Psychiatry Res*. 1990;31:201-208.
22. Åsberg M, Eriksson B, Mårtensson B, Träskman-Bendz L, Wägner A. Therapeutic effects of serotonin uptake inhibitors in depression. *J Clin Psychiatry*. 1986;47(suppl 4):23-35.
23. Shopsin B, Friedman E, Gershon S. Parachlorophenylalanine reversal of tranylcypromine effects in depressed patients. *Arch Gen Psychiatry*. 1976;33:811-819.
24. Delgado PL, Charney DS, Price LH, Aghajanian GK, Landis H, Heninger GR. Serotonin function and the mechanism of antidepressant action: reversal of antidepressant-induced remission by rapid depletion of plasma tryptophan. *Arch Gen Psychiatry*. 1990;47:411-418.
25. Flory JD, Mann JJ, Manuck SB, Muldoon MF. Recovery from major depression is not associated with normalization of serotonergic function. *Biol Psychiatry*. 1998;43:320-326.
26. Åsberg M, Nordström P, Träskman-Bendz L. Cerebrospinal fluid studies in suicide: an overview. *Ann N Y Acad Sci*. 1986;487:243-255.
27. Nordström P, Samuelsson M, Åsberg M, Träskman-Bendz L, Åberg-Wistedt A, Nordin C, Bertilsson L. CSF 5-HIAA predicts suicide risk after attempted suicide. *Suicide Life Threat Behav*. 1994;24:1-9.
28. Träskman-Bendz L, Alling C, Orelund L, Regnéll G, Vinge E, Öhman R. Prediction of suicidal behavior from biologic tests. *J Clin Psychopharmacol*. 1992;12(suppl):21S-26S.
29. Roy A, De Jong J, Linnoila M. Cerebrospinal fluid monoamine metabolites and suicidal behavior in depressed patients: a 5-year follow-up study. *Arch Gen Psychiatry*. 1989;46:609-612.
30. Arango V, Underwood MD. Serotonin chemistry in the brain of suicide victims. In: Maris R, Silverman M, Canetto S, eds. *Review of Suicidology, 1997*. New York, NY: Guilford Publications; 1997:237-250.
31. Paul SM, Rehavi M, Skolnick P, Goodwin FK. High affinity binding of antidepressants to a biogenic amine transport site in human brain and platelet: studies in depression. In: Post RM, Bellinger CJ, eds. *Neurobiology of Mood Disorders*. Baltimore, Md: Williams & Wilkins; 1984:846-853.
32. Arató M, Tekes K, Tóthfalusi L, Magyar K, Palkovits M, Frecska E, Falus A, MacCrimmon DJ. Reversed hemispheric asymmetry of imipramine binding in suicide victims. *Biol Psychiatry*. 1991;29:699-702.
33. Arató M, Tekes K, Palkovits M, Demeter E, Falus A. Serotonergic split brain and suicide. *Psychiatry Res*. 1987;21:355-356.
34. Crow TJ, Cross AJ, Cooper SJ, Deakin JFW, Ferrier IN, Johnson JA, Joseph MH, Owen F, Poulter M, Lofthouse R, Corsellis JAN, Chambers DR, Blessed G, Perry EK, Perry RH, Tomlinson BE. Neurotransmitter receptors and monoamine metabolites in the brains of patients with Alzheimer-type dementia and depression, and suicides. *Neuropharmacology*. 1984;23:1561-1569.
35. Stanley M, Virgilio J, Gershon S. Tritiated imipramine binding sites are decreased in the frontal cortex of suicides. *Science*. 1982;216:1337-1339.
36. Meyerson LR, Wennogle LP, Abel MS, Coupet J, Lippa AS, Rauh CE, Beer B. Human brain receptor alterations in suicide victims. *Pharmacol Biochem Behav*. 1982;17:159-163.
37. Arora RC, Meltzer HY. <sup>3</sup>H-imipramine binding in the frontal cortex of suicides. *Psychiatry Res*. 1989;30:125-135.
38. Arora RC, Meltzer HY. Laterality and <sup>3</sup>H-imipramine binding: studies in the frontal cortex of normal controls and suicide victims. *Biol Psychiatry*. 1991;29:1016-1022.
39. Owen F, Chambers DR, Cooper SJ, Crow TJ, Johnson JA, Lofthouse R, Poulter M. Serotonergic mechanisms in brains of suicide victims. *Brain Res*. 1986;362:185-188.
40. Mann JJ, Henteloff RA, Lagattuta TF, Perper JA, Li S, Arango V. Lower <sup>3</sup>H-paroxetine binding in cerebral cortex of suicide victims is partly due to fewer high-affinity, non-transporter sites. *J Neural Transm*. 1996;103:1337-1350.
41. Laruelle M, Abi-Dargham A, Casanova MF, Toti R, Weinberger DR, Kleinman JE. Selective abnormalities of prefrontal serotonergic receptors in schizophrenia: a postmortem study. *Arch Gen Psychiatry*. 1993;50:810-818.
42. Lawrence KM, De Paermentier F, Cheetham SC, Crompton MR, Katona CLE, Horton RW. Symmetrical hemispheric distribution of <sup>3</sup>H-paroxetine binding sites in postmortem human brain from controls and suicides. *Biol Psychiatry*. 1990;28:544-546.
43. Lawrence KM, De Paermentier F, Cheetham SC, Crompton MR, Katona CLE, Horton RW. Brain 5-HT uptake sites, labelled with [<sup>3</sup>H]paroxetine, in antidepressant-free depressed suicides. *Brain Res*. 1990;526:17-22.
44. Mann JJ, Arango V, Marzuk PM, Theccanat S, Reis DJ. Evidence for the 5-HT hypothesis of suicide: a review of post-mortem studies. *Br J Psychiatry*. 1989;155(suppl 8):7-14.
45. Arango V, Mann JJ. Relevance of serotonergic postmortem studies to suicidal behavior. *Int Rev Psychiatry*. 1992;4:131-140.
46. Arango V, Underwood MD, Gubbi AV, Mann JJ. Localized alterations in pre- and postsynaptic serotonin binding sites in the ventrolateral prefrontal cortex of suicide victims. *Brain Res*. 1995;688:121-133.
47. Psychobiology of suicidal behavior. In: Mann JJ, Stanley M, eds. *Annals of the New York Academy of Sciences*. New York, NY: The New York Academy of Sciences; 1986;487:1-357.
48. The neurobiology of suicide: from the bench to the clinic. In: Stoff DM, Mann JJ, eds. *Annals of the New York Academy of Sciences*. New York, NY: The New York Academy of Sciences; 1997;836:1-365.
49. Malone KM, Mann JJ. Serotonin and major depression. In: Mann JJ, Kupfer DJ, eds. *Biology of Depressive Disorders, Volume 3, Part A: A System Perspective*. New York, NY: Plenum Publishing Corp; 1993:29-49.
50. Mann JJ. The neurobiology of suicide. *Nat Med*. 1998;4:25-30.
51. Owens MJ, Nemeroff CB. Role of serotonin in the pathophysiology of depression: focus on the serotonin transporter. *Clin Chem*. 1994;40:288-295.
52. Gershon ES. Genetics. In: Goodwin FK, Jamison KR, eds. *Manic-Depressive Illness*. New York, NY: Oxford University Press Inc; 1990:373-401.
53. Roy A, Segal NL, Sarchiapone M. Attempted suicide among living co-twins of twin suicide victims. *Am J Psychiatry*. 1995;152:1075-1076.
54. Roy A. Genetic and biologic risk factors for suicide in depressive disorders. *Psychiatr Q*. 1993;64:345-358.



55. Higley JD, King ST, Hasert MF, Champoux M, Suomi SJ, Linnoila M. Stability of interindividual differences in serotonin function and its relationship to severe aggression and competent social behavior in rhesus macaque females. *Neuropsychopharmacology*. 1996;14:67-76.
56. Mann JJ, Malone KM, Nielsen DA, Goldman D, Erdos J, Gelernter J. Possible association of a polymorphism of the tryptophan hydroxylase gene with suicidal behavior in depressed patients. *Am J Psychiatry*. 1997;154:1451-1453.
57. Jönsson EG, Goldman D, Spurlock G, Gustavsson JP, Nielsen DA, Linnoila M, Owen MJ, Sedvall GC. Tryptophan hydroxylase and catechol-O-methyltransferase gene polymorphisms: relationships to monoamine metabolite concentrations in CSF of healthy volunteers. *Eur Arch Psychiatry Clin Neurosci*. 1997;247:297-302.
58. Nielsen DA, Virkkunen M, Lappalainen J, Eggert M, Brown GL, Long JC, Goldman D, Linnoila M. A tryptophan hydroxylase gene marker for suicidality and alcoholism. *Arch Gen Psychiatry*. 1998;55:593-602.
59. Manuck SB, Flory JD, Ferrell RE, Dent KM, Mann JJ, Muldoon MF. Aggression and anger-related traits associated with a polymorphism of the tryptophan hydroxylase gene. *Biol Psychiatry*. 1999;45:603-614.
60. Perry EK, Marshall EF, Blessed G, Tomlinson BE, Perry RH. Decreased imipramine binding in the brains of patients with depressive illness. *Br J Psychiatry*. 1983;142:188-192.
61. Malison RT, Price LH, Berman R, Van Dyck CH, Pelton GH, Carpenter L, Sancora G, Owens MJ, Nemeroff CB, Rajeevan N, Baldwin RM, Seibyl JP, Innis RB, Charney DS. Reduced brain serotonin transporter availability in major depression as measured by [<sup>123</sup>I]-2β-carbomethoxy-3β-(4-iodophenyl)tropane and single photon emission computed tomography. *Biol Psychiatry*. 1998;44:1090-1098.
62. Weissman M, Fox K, Klerman GL. Hostility and depression associated with suicide attempts. *Am J Psychiatry*. 1973;130:450-455.
63. Fulwiler C, Grossman H, Forbes C, Ruthazer R. Early-onset substance abuse and community violence by outpatients with chronic mental illness. *Psychiatr Serv*. 1997;48:1181-1185.
64. Mann JJ. Violence and aggression. In: Bloom FE, Kupfer DJ, eds. *Psychopharmacology: The Fourth Generation of Progress*. New York, NY: Raven Press; 1995:1919-1928.
65. Barratt ES. Factor analysis of some psychometric measures of impulsiveness and anxiety. *Psychol Rep*. 1965;16:547-554.
66. Lesch K-P, Bengel D, Heils A, Sabol SZ, Greenberg BD, Petri S, Benjamin J, Müller CR, Hamer DH, Murphy DL. Association of anxiety-related traits with a polymorphism in the serotonin transporter gene regulatory region. *Science*. 1996;274:1527-1531.
67. Kelsoe JR, Remick RA, Sadovnick AD, Kristbjarnarson H, Flodman P, Spence MA, Morison M, Mroczkowski-Parker Z, Bergesch P, Rapaport MH, Mirowski AL, Blakely RD, Helgason T, Egeland JA. Genetic linkage study of bipolar disorder and the serotonin transporter. *Am J Med Genet*. 1996;67:215-217.
68. Kunugi H, Hattori M, Kato T, Tatsumi M, Sakaki T, Hirose T, Nanko S. Serotonin transporter gene polymorphisms: ethnic difference and possible association with bipolar affective disorder. *Mol Psychiatry*. 1997;2:457-462.
69. Rees M, Norton N, Jones I, McCandless F, Scourfield J, Holmans P, Moorhead S, Feldman E, Sadler S, Cole T, Redman K, Farmer A, McGuffin P, Owen MJ. Association studies of bipolar disorder at the human serotonin transporter gene (hSERT/5HTT). *Mol Psychiatry*. 1997;2:398-402.
70. Collier DA, Stöber G, Li T, Heils A, Catalano M, Bella DD, Arranz MJ, Murray RM, Vallada HP, Bengel D, Müller CR, Roberts GW, Smeraldi E, Kirov G, Sham P, Lesch KP. A novel functional polymorphism within the promoter of the serotonin transporter gene: possible role in susceptibility to affective disorders. *Mol Psychiatry*. 1996;1:453-460.
71. Rosenthal NE, Mazzanti CM, Barnett RL, Hardin TA, Turner EH, Lam GK, Ozaki N, Goldman D. Role of serotonin transporter promoter repeat length polymorphism (5-HTTLPR) in seasonal affective disorder. *Mol Psychiatry*. 1998;3:175-177.
72. Mann JJ, Waternaux C, Haas GL, Malone KM. Towards a clinical model of suicidal behavior in psychiatric patients. *Am J Psychiatry*. 1999;156:181-189.
73. The neuropharmacology of serotonin. In: Whitaker-Azmitia PM, Peroutka SJ, eds. *Annals of the New York Academy of Sciences*. New York, NY: The New York Academy of Sciences; 1990;600:1-715.
74. Sander T, Harms H, Lesch K-P, Dufeu P, Kuhn S, Hoehe M, Rommelspacher H, Schmidt LG. Association analysis of a regulatory variation of the serotonin transporter gene with severe alcohol dependence. *Alcohol Clin Exp Res*. 1997;21:1356-1359.
75. Schuckit MA, Mazzanti C, Smith TL, Ahmed U, Radel M, Iwata N, Goldman D. Selective genotyping for the role of 5-HT<sub>2A</sub>, 5-HT<sub>2C</sub>, and GABA<sub>A</sub> receptors and the serotonin transporter in the level of response to alcohol: a pilot study. *Biol Psychiatry*. 1999;45:647-651.
76. Gelernter J, Kranzler H, Cubells JF. Serotonin transporter protein (SLC6A4) allele and haplotype frequencies and linkage disequilibria in African- and European-American and Japanese populations and in alcohol-dependent subjects. *Hum Genet*. 1997;101:243-246.
77. Ebstein RP, Gritsenko I, Nemanov L, Frisch A, Osher Y, Belmaker RH. No association between the serotonin transporter gene regulatory region polymorphism and the Tridimensional Personality Questionnaire (TPQ) temperament of harm avoidance. *Mol Psychiatry*. 1997;2:224-226.
78. Ball D, Hill L, Freeman B, Eley TC, Strelau J, Riemann R, Spinath FM, Angleitner A, Plomin R. The serotonin transporter gene and peer-rated neuroticism. *Neuroreport*. 1997;8:1301-1304.
79. Kelly TM, Mann JJ. Validity of DSM-III-R diagnosis by psychological autopsy: a comparison with antemortem diagnosis. *Acta Psychiatr Scand*. 1996;94:337-343.
80. Arango V, Ernsberger P, Marzuk PM, Chen J-S, Tierney H, Stanley M, Reis DJ, Mann JJ. Autoradiographic demonstration of increased serotonin 5-HT<sub>2</sub> and β-adrenergic receptor binding sites in the brain of suicide victims. *Arch Gen Psychiatry*. 1990;47:1038-1047.
81. Kovachich GB, Aronson CE, Brunswick DJ, Frazer A. Quantitative autoradiography of serotonin uptake sites in rat brain using <sup>3</sup>H-cyanoimipramine. *Brain Res*. 1988;454:78-88.
82. Huang Y, Grailhe R, Arango V, Hen R, Mann JJ. Relationship of psychopathology to the human serotonin1B genotype and receptor binding kinetics in post-mortem brain tissue. *Neuropsychopharmacology*. 1999;21:238-246.
83. Ferrier IN, McKeith IG, Cross AJ, Perry EK, Candy JM, Perry RH. Postmortem neurochemical studies in depression. *Ann N Y Acad Sci*. 1986;487:128-142.
84. Hrdina PD, Demeter E, Vu TB, Sótónyi P, Palkovits M. 5-HT uptake sites and 5-HT<sub>2</sub> receptors in brain of antidepressant-free suicide victims/depressives: increase in 5-HT<sub>2</sub> sites in cortex and amygdala. *Brain Res*. 1993;614:37-44.
85. Du L, Faludi G, Palkovits M, Demeter E, Bakish D, Lapiere YD, Sótónyi P, Hrdina PD. Frequency of long allele in serotonin transporter gene is increased in depressed suicide victims. *Biol Psychiatry*. 1999;46:196-201.
86. Gross-Isseroff R, Israeli M, Biegon A. Autoradiographic analysis of tritiated imipramine binding in the human brain post mortem: effects of suicide. *Arch Gen Psychiatry*. 1989;46:237-241.
87. Shallice T, Burgess P. The domain of supervisory processes and temporal organization of behaviour. *Philos Trans R Soc Lond B Biol Sci*. 1996;351:1405-1412.
88. Damasio H, Grabowski T, Frank R, Galaburda AM, Damasio AR. The return of Phineas Gage: clues about the brain from the skull of a famous patient. *Science*. 1994;264:1102-1105.
89. Geller B, Cook EH Jr. Serotonin transporter gene (HTTLPR) is not in linkage disequilibrium with prepubertal and early adolescent bipolarity. *Biol Psychiatry*. 1999;45:1230-1233.
90. Furlong RA, Ho L, Walsh C, Rubinsztein JS, Jain S, Paykel ES, Easton DF, Rubinsztein DC. Analysis and meta-analysis of two serotonin transporter gene polymorphisms in bipolar and unipolar affective disorders. *Am J Med Genet*. 1998;81:58-63.
91. Oruc L, Verheyen GR, Furac I, Jakovljevic M, Ivezic S, Raymaekers P, Van Broeckhoven C. Association analysis of the 5-HT<sub>2C</sub> receptor and 5-HT transporter genes in bipolar disorder. *Am J Med Genet*. 1997;74:504-506.
92. Gutiérrez B, Arranz MJ, Collier DA, Vallés V, Guíllamat R, Bertranpetit J, Murray RM, Fañanás L. Serotonin transporter gene and risk for bipolar affective disorder: an association study in a Spanish population. *Biol Psychiatry*. 1998;43:843-847.
93. Hoehe MR, Wendel B, Grunewald I, Chiaroni P, Levy N, Morris-Rosendahl D, Macher JP, Sander T, Crocq M-A. Serotonin transporter (5-HTT) gene polymorphisms are not associated with susceptibility to mood disorders. *Am J Med Genet*. 1998;81:1-3.
94. Greenberg BD, Murphy DL. Serotonin transporter candidate gene studies in affective disorders and personality: promises and potential pitfalls. *Mol Psychiatry*. 1998;3:186-189.
95. Ewald H, Flint T, Degn B, Mors O, Kruse TA. A functional variant of the serotonin transporter gene in families with bipolar affective disorder. *J Affect Disord*. 1998;48:135-144.
96. Vincent JB, Masellis M, Lawrence J, Choi V, Gurling HMD, Phil M, Parikh SV, Kennedy JL. Genetic association analysis of serotonin system genes in bipolar affective disorder. *Am J Psychiatry*. 1999;156:136-138.
97. Kirov G, Rees M, MacCandless JF, Owen MJ, Craddock N. Bipolar disorder and the serotonin transporter gene: a family-based association study. *Psychol Med*. 1999;29:1249-1254.
98. Nobile M, Begni B, Giorda R, Frigerio A, Marino C, Molteni M, Ferrarese C, Battaglia M. Effects of serotonin transporter promoter genotype on platelet serotonin transporter functionality in depressed children and adolescents. *J Am Acad Child Adolesc Psychiatry*. 1999;38:1396-1402.
99. Brown RP, Stoll PM, Stokes PE, Frances A, Sweeney JA, Kocsis JH, Mann JJ.

- Adrenocortical hyperactivity in depression: effects of agitation, delusions, melancholia, and other illness variables. *Psychiatry Res.* 1987;23:167-178.
100. Carroll BJ, Curtis GC, Davies BM, Mendels J, Sugerman AA. Urinary free cortisol excretion in depression. *Psychol Med.* 1976;6:43-50.
  101. Sachar EJ, Hellman L, Fukushima DK, Gallagher TF. Cortisol production in depressive illness. *Arch Gen Psychiatry.* 1970;23:289-298.
  102. Kuroda Y, Watanabe Y, Albeck DS, Hastings NB, McEwen BS. Effects of adrenalectomy and type I or type II glucocorticoid receptor activation on 5-HT<sub>1A</sub> and 5-HT<sub>2</sub> receptor binding and 5-HT transporter mRNA expression in rat brain. *Brain Res.* 1994;648:157-161.
  103. Bradley CC, Blakely RD. Alternative splicing of the human serotonin transporter gene. *J Neurochem.* 1997;69:1356-1367.
  104. Di Bella D, Catalano M, Balling U, Smeraldi E, Lesch K-P. Systematic screening for mutations in the coding region of the human serotonin transporter (5-HTT) gene using PCR and DGGE. *Am J Med Genet.* 1996;67:541-545.
  105. Mortensen OV, Thomassen M, Larsen MB, Whittemore SR, Wiborg O. Functional analysis of a novel human serotonin transporter gene promoter in immortalized raphe cells. *Mol Brain Res.* 1999;68:141-148.
  106. Serretti A, Catalano M, Smeraldi E. Serotonin transporter gene is not associated with symptomatology of schizophrenia. *Schizophr Res.* 1999;35:33-39.
  107. Serretti A, Lattuada E, Catalano M, Smeraldi E. Serotonin transporter gene not associated with psychotic symptomatology of mood disorders. *Psychiatry Res.* 1999;86:59-65.
  108. Sallee FD, Hilal R, Dougherty D, Beach K, Nesbitt L. Platelet serotonin transporter in depressed children and adolescents: <sup>3</sup>H-paroxetine platelet binding before and after sertraline. *J Am Acad Child Adolesc Psychiatry.* 1998;37:777-784.
  109. McQueen JK, Wilson H, Sumner BEH, Fink G. Serotonin transporter (SERT) mRNA and binding site densities in male rat brain affected by sex steroids. *Mol Brain Res.* 1999;63:241-247.
  110. McQueen JK, Wilson H, Fink G. Estradiol-17 $\beta$  increases serotonin transporter (SERT) mRNA levels and the density of SERT-binding sites in female rat brain. *Mol Brain Res.* 1999;45:13-23.
  111. Fink G, Sumner BE. Sex steroid control of mood, mental state and memory. *Clin Exp Pharmacol Physiol.* 1998;25:764-765.
  112. Hernandez I, Sokolov BP. Abnormal expression of serotonin transporter mRNA in the frontal and temporal cortex of schizophrenics. *Mol Psychiatry.* 1997;2:57-64.
  113. Weissman MM, Bland RC, Canino GJ, Faravelli C, Greenwald S, Hwu HG, Joyce PR, Karam EG, Lee CK, Lellouch J, Lépine JP, Newman SC, Rubio-Stipec M, Wells JE, Wickramaratne PJ, Wittchen HU, Yeh EK. Cross-national epidemiology of major depression and bipolar disorder. *JAMA.* 1996;276:293-299.
  114. Benmansour S, Cecchi M, Morilak DA, Gerhardt GA, Javors MA, Gould GG, Frazer A. Effects of chronic antidepressant treatments on serotonin transporter function, density, and mRNA level. *J Neurosci.* 1999;19:10494-10501.
  115. Nemeroff CB, Knight DL, Franks J, Craighead WE, Krishnan KRR. Further studies on platelet serotonin transporter binding in depression. *Am J Psychiatry.* 1994;151:1623-1625.
  116. Linnoila M, Virkkunen M, Scheinin M, Nuutila A, Rimond R, Goodwin FK. Low cerebrospinal fluid 5-hydroxyindoleacetic acid concentration differentiates impulsive from non-impulsive violent behavior. *Life Sci.* 1983;33:2609-2614.
  117. Virkkunen M, Eggert M, Rawlings R, Linnoila M. A prospective follow-up study of alcoholic violent offenders and fire setters. *Arch Gen Psychiatry.* 1996;53:523-529.
  118. Virkkunen M, De Jong J, Bartko J, Goodwin FK, Linnoila M. Relationship of psychobiological variables to recidivism in violent offenders and impulsive fire setters: a follow-up study. *Arch Gen Psychiatry.* 1989;46:600-603.
  119. Virkkunen M, Nuutila A, Goodwin FK, Linnoila M. Cerebrospinal fluid monoamine metabolites levels in male arsonists. *Arch Gen Psychiatry.* 1987;44:241-247.
  120. Ballenger JC, Goodwin FK, Major LF, Brown GL. Alcohol and central serotonin metabolism in man. *Arch Gen Psychiatry.* 1979;36:224-227.
  121. Tiihonen J, Kuikka JT, Bergström KA, Karhu J, Lehtonen J, Hallikainen T, Yang J, Hakola P. Single-photon emission tomography imaging of monoamine transporters in impulsive violent behaviour. *Eur J Nucl Med.* 1997;24:1253-1260.
  122. Heinz A, Ragan P, Jones DW, Hommer D, Williams W, Knable MB, Gorey JG, Doty L, Geyer C, Lee KS, Coppola R, Weinberger DR, Linnoila M. Reduced central serotonin transporters in alcoholism. *Am J Psychiatry.* 1998;155:1544-1549.
  123. Little KY, McLaughlin DP, Zhang L, Livermore CS, Dalack GW, McFintin PR, DelProposto ZS, Hill E, Cassin BJ, Watson SJ, Cook EH. Cocaine, ethanol, and genotype effects on human midbrain serotonin transporter binding sites and mRNA levels. *Am J Psychiatry.* 1998;155:207-213.
  124. Moreno FA, Gelenberg AJ, Heninger GR, Potter RL, McKnight KM, Allen J, Phillips AP, Delgado PL. Tryptophan depletion and depressive vulnerability. *Biol Psychiatry.* 1999;46:498-505.
  125. Virkkunen M, Goldman D, Nielsen DA, Linnoila M. Low brain serotonin turnover rate (low CSF 5-HIAA) and impulsive violence. *J Psychiatry Neurosci.* 1995;20:271-275.