

A Family Study of Alzheimer Disease and Early- and Late-Onset Depression in Elderly Patients

Reinhard Heun, MD; Andreas Papassotiropoulos, MD; Frank Jessen, MD; Wolfgang Maier, MD; John C. S. Breitner, MD

Background: The substantial symptomatic overlap between depression and dementia in old age may be explained by common genetic vulnerability factors.

Methods: We investigated this idea by comparing the occurrence of both disorders in first-degree relatives of 78 patients with Alzheimer disease (AD), of 74 with late-onset depression (onset age of ≥ 60 years), of 78 with early-onset depression, of 53 with comorbid lifetime diagnoses of AD/depression, and of 162 population control subjects. Diagnostic information on their 3002 relatives was obtained from structured direct assessments and from family history interviews.

Results: The 90-year lifetime incidence of primary progressive dementia was significantly higher in relatives of patients with AD (30%) and comorbid AD/depression (27%) than in relatives of patients with early-onset (21%) or late-onset (26%) depression, or of controls (22%)

($P = .01$). Lifetime incidence of depression was significantly higher in relatives of patients with early-onset depression (13%) than in relatives of patients with AD (10%) or controls (9.0%) ($P = .006$). Lifetime incidence of depression was similar in control relatives and in relatives of those patients with comorbid AD/depression (8.6%). Relatives of patients with late-onset depression also showed similar occurrence of depression until the age of 80 years, but the figure increased sharply thereafter to 19.1% by the age of 90 years.

Conclusions: Primary progressive dementia and early-onset depression represent clinical entities with distinct inheritance. Late-onset depression does not share substantial inheritance in common with dementia or with early-onset depression, but does show modest familial clustering.

Arch Gen Psychiatry. 2001;58:190-196

DEPRESSION IS common in old age,^{1,2} and cognitive dysfunction, including severe memory deficit, is frequent in elderly patients with depression.³⁻⁷ Likewise, depressive symptoms are often seen in those with Alzheimer disease (AD).⁸⁻¹⁰ The cause of such symptom overlap in geriatric depression and AD is unclear, but it may reflect common genetic antecedents. Especially when genetic causes are suspected, family studies can inform the causative classification of psychiatric disorders in that relatives of subjects with one causative entity should show an increased risk of this, but not other, conditions. By contrast, when 2 or more syndromes have common genetic antecedents, their relatives should show increased risks of all such related syndromes, but not of other disorders.¹¹

Such reasoning presupposes significant familial aggregation for the disorders in question, eg, AD and depression.

This presupposition is justified for AD and for early-onset depression (EOD), but is less secure for late-onset depression (LOD). First-degree relatives of patients with AD show a 2- to 3-fold increased occurrence of primary progressive dementias (PPDs), as contrasted with control relatives.¹²⁻²⁰ Similarly, increased risks have been reported for depression in relatives of (mostly young) patients with bipolar I and II disorder and for relatives of patients with early-onset unipolar depression.²¹⁻²⁴ When the proband's onset of depression is later, the findings are less consistent. Maier and colleagues²⁵ showed a higher risk of depression in first-degree relatives of patients with LOD (onset age of ≥ 60 years) than in relatives of controls. Other groups²⁵⁻²⁹ have reported lower loads of depression in relatives of probands with LOD than in relatives of patients with EOD, but there are exceptions.³⁰ Brodaty and coauthors³¹ observed lower risks of depression in parents, but not in siblings, of patients with LOD.

From the Department of Psychiatry, University of Bonn, Bonn, Germany (Drs Heun, Papassotiropoulos, Jessen, and Maier); and the Department of Mental Hygiene, The Johns Hopkins School of Public Health, Baltimore, Md (Dr Breitner).

PATIENTS AND METHODS

RECRUITMENT OF PATIENTS, CONTROLS, AND THEIR FIRST-DEGREE RELATIVES

Between January 1, 1992, and October 31, 1995, and between January 1, 1996, and December 31, 1998, we recruited in sequence patients aged 60 years or older from the clinics of the University of Bonn, Bonn, and the University of Mainz, Mainz, Germany, respectively. The resulting patient sample included 78 with AD, 78 with EOD, 74 with LOD (onset age of ≥ 60 years), and 53 with AD/depression (comorbid patients). In the same years, we recruited 162 control subjects who were group matched to the patient sample on age, sex, and educational background. With the support of the cities' census agencies, we used a weighted, stratified, systematic sampling approach to select matched controls at random from the inhabitants' registers of the 2 communities (Table). We contacted the control subjects by mail or, if they did not respond, by telephone to administer a personal interview. The patients and controls were asked to provide names and addresses for all first-degree relatives. All procedures involving contact with human subjects were approved by the relevant local ethics committees, and informed consent was obtained for each stage of direct contact. We also asked the relatives whom we interviewed to obtain assent from their unavailable family members for their inclusion in the analyses.

Because PPD is rare before the age of 50 years (in 1775 relatives aged < 50 years, only 1 showed PPD), we required that all patients and controls have at least one first-degree relative aged 50 years or older available for interview. Among eligible patients, the participation rate was then 87%.⁴⁰ Without prior information on the availability of control relatives, we could not calculate a comparable participation rate among eligible controls. Nonparticipant patients were broadly similar to participants on age, sex, and marital status, but had slightly higher educational attainment.⁴⁰ Educational background was similar, however, for each group of patients and for controls. As expected, patients with EOD were slightly younger than the other groups (Table).

Given the high prevalence of many mental disorders, several investigators⁴¹⁻⁴³ have noted that the use of disease-free controls can artificially inflate distinctions in case-control comparisons. Others⁴⁴ have, therefore, proposed that selected (disease-free) and unselected controls should be

used, but this approach creates additional statistical comparisons. Because we were interested in comparing risks in various relative groups vs the general population, we followed the conservative practice of not requiring that controls be disease free. An unselected general population control panel also enabled the use of a single large group of control relatives for all comparisons. Accordingly, our 162 control individuals included 22 with dementia, 8 with EOD, and 9 with past or current LOD.

FIRST-DEGREE RELATIVES

Two first-degree relatives asked not to be included in the study, and their data were consequently excluded from analysis. The 445 study probands then had 3002 first-degree relatives (Table). We could not learn whether 210 (7.0%) of these relatives were living or dead but assumed that many were long deceased or lost to follow-up, probably as a result of wartime conditions. Of the remaining 2792 relatives, 1236 (44.3%) were deceased (Table). We succeeded in interviewing 775 (49.8%) of the remainder. Living relatives of probands with EOD were somewhat younger, while educational attainment was slightly lower among interviewed relatives of patients with LOD (Table). We interviewed a higher proportion of female than male relatives (52.7% vs 43.5%; $\chi^2_1 = 14.2$; $P < .001$), but there were no important differences in sex composition of the various relative groups. Ostensibly psychiatrically ill relatives of control subjects (but not of patients) were less available for interview than their healthy counterparts.⁴⁰ To prevent an awareness bias when comparing relatives of patients and controls, we, therefore, included source of information (interview vs family history information only) as a covariate in the survival analyses. We also made separate comparisons using interviewed and unavailable relatives and obtained identical results.

DIAGNOSTIC ASSESSMENT

The clinical examination of the patients consisted of personal and family histories, neurological and medical assessments, an extensive laboratory workup, electroencephalography, computed tomography or magnetic resonance imaging, and other tests if indicated. The patients, controls, and their available first-degree relatives were

Continued on next page

Few studies have examined the familial aggregation of AD and depression simultaneously. The available studies³²⁻³⁶ have often shown increased occurrence of depression and other psychiatric disorders among the relatives of patients with AD, and vice versa. Two groups^{37,38} reported an increase in depression among relatives of probands with AD, specifically when the latter had comorbid depression. Another study³⁹ confirmed this finding only for female probands with AD. Important limitations of these studies, and probable reasons for their inconsistent results, may be their limited size (in most instances) and their investigation of only 1 or 2 disorders in patients or their relatives. Most studies also used the family history method rather than more precise family study methods, in which ill relatives are directly examined.

To our knowledge, we undertook the first family study of PPD and depressive syndromes among relatives of probands with AD, EOD, and LOD, among relatives of patients with comorbid AD/depression, and among relatives of matched population controls. We investigated the following hypotheses:

1. Alzheimer disease and EOD have different genetic antecedents and, therefore, different patterns of familial aggregation. Accordingly, relatives of probands with AD will have higher loads of PPD than relatives of patients with EOD or controls. Relatives of probands with EOD will show more depression than relatives of patients with AD or controls.

2. Late-onset depression belongs to the broad spectrum of depressive disorders. Therefore, relatives of

assessed using the Composite International Diagnostic Interview⁴⁵ to assign lifetime *DSM-III-R* diagnoses for major psychiatric disorders.⁴⁶ To detect and diagnose dementia, we interviewed patients, controls, and their relatives older than 50 years using the Structured Interview for the Diagnosis of Dementia of the Alzheimer Type, Multi-Infarct Dementia and Dementias of Other Aetiology.⁴⁷ Both instruments include the Mini-Mental State Examination.⁴⁸ To detect depression and dementia in living and deceased relatives, we also used the Family History Questionnaire⁴⁹ and the Family Dementia Risk Questionnaire.^{14,50} We obtained family history information from spouses and all interviewed relatives. The interviewers were medical students in their final years of training or junior physicians. They had been trained in a 4-week clinical clerkship on a geropsychiatric ward, and had participated in a comprehensive training course, including at least 10 supervised training interviews. The interviewers were "blind" to the patients' (and control subjects') diagnoses. To maintain this blindness, they did not ask for information about the probands. Final diagnoses and age at onset were assigned using the best-estimate procedure⁵¹ according to the consensus judgment of 2 experienced psychiatrists (R.H. and A.P.) who remained blind to the identity of all probands and relatives.

We rarely obtained identical diagnoses for a relative from combinations of 2 or more direct interviews or family history interviews. We, therefore, combined lifetime diagnoses into broad categories for which agreement was high. Diagnoses of major depression included *DSM-III-R* codes 296.20 to 296.36. We diagnosed PPD (codes 290.00-290.30) rather than AD in relatives because the latter can only be diagnosed after a clinical workup. Interrater reliability of the direct interview data was satisfactory for major depression (Cohen $\kappa=0.67$; 95% confidence interval, 0.37-1.00) and for PPD (Cohen $\kappa=1.00$; 95% confidence interval, 0.78-1.00). Interinformant reliability of family history-based diagnoses was moderate for PPD (Cohen $\kappa=0.58$; 95% confidence interval, 0.48-0.68) but weaker for depression (Cohen $\kappa=0.26$; 95% confidence interval, 0.14-0.38).⁵² Compared with direct interview results, family history data showed limited sensitivity but good specificity, namely, sensitivity and specificity of 20.8% and 98.4% for dementia and 34.0% and 97.1% for depression, respectively. These sensitivity estimates reflect the comparison of family history information obtained from all available informants vs a

direct interview of those who could participate in the latter. The sensitivity of family history interviews increased substantially with severity or duration of illness.⁵³ The low sensitivity of family history information will reduce observed lifetime incidence, but it should not affect comparisons of risks across relatives of various patient groups or controls unless the sensitivity varied according to the diagnosis in the proband. To control for the latter effect, we included the source of information (direct assessment vs family history data) as a covariate when comparing survival curves. Like Kendler and colleagues,⁵⁴ we found increased sensitivity in the reporting of depression by relatives who had themselves experienced a depressive illness.⁵³ To avoid spurious familial aggregation resulting from this problem, we discarded the family history information obtained from 93 relatives with one of the diagnoses under study. Other diagnostic information, including direct interview results, remained available for these relatives.

STATISTICAL ANALYSES

Group comparisons used the χ^2 statistic, analysis of variance, and the Scheffé tests. To compare the risks of depression and PPD in relatives of the various groups of patients and controls, we calculated Kaplan-Meier survival curves. Multivariate Cox proportional hazards regression analyses were then used according to the study hypotheses.⁵⁵ We cite resulting hazard ratios (HRs) instead of corresponding χ^2 values for individual comparisons if the HR can be interpreted, ie, if $P \leq .05$ and $df=1$. For clarity, the final analyses were restricted to include only variables with significant influence on familial loads for depression and PPD, namely, sex and source of information (family history vs direct interview). Because proportional hazards analysis relies on the (not necessarily justified) assumption of proportionality in the effects of various predictor variables across multiple groups, we also examined differences among the several Kaplan-Meier curves using distribution-free Mantel-Haenszel statistics⁵⁶ (the weakness of this method being its lack of consideration to covariates or to examination of interaction effects). Unless otherwise stated, all χ^2 statistics have 1 *df*. The conventional threshold for statistical significance (α) was taken as $P < .05$ (2 tailed). A priori power calculations had shown that we would then need about 60 families in each group to afford a probability of 80% ($\beta = .20$) of detecting significant differences among the survival curves.

probands with LOD will show more depression than relatives of controls, but they will not show higher risks of PPD than relatives of patients with EOD or controls.

3. Alternatively, LOD belongs to the broad spectrum of dementing disorders. Therefore, relatives of patients with LOD will show more PPD than relatives of probands with EOD or controls, but they will not show more depression than relatives of patients with AD or controls.

4. Patients with a history of AD/depression (comorbid cases) are genetically vulnerable to dementia and depression. Therefore, the relatives of such comorbid probands will show more PPD than the relatives of patients with EOD or controls, and more depression than the relatives of probands with AD or controls.

RESULTS

PPD IN RELATIVES

Figure 1 presents Kaplan-Meier curves of estimated PPD-free survival among relatives of the various patient and control groups. Proportional hazards regression analysis revealed significant differences in disease-free survival among relatives of the different proband groups (Wald $\chi^2_4=17.0$; $P = .002$). Risks were increased in relatives of patients with AD and of patients with comorbid AD/depression compared with control relatives (HR, 2.38 [$P < .001$] and 2.06 [$P = .01$], respectively). Sex had no significant influence on the risk of PPD ($\chi^2=1.86$; $P = .17$). Direct interviewing increased the chance of detecting PPD

Description of 445 Patients and Control Subjects and 2792 First-Degree Relatives by Diagnoses of Patients and Controls*

Variable	Patients' Diagnoses				Control Subjects	Group Comparison (ANOVA or Pearson χ^2 Test)
	AD	AD/Depression	Early-Onset Depression†	Late-Onset Depression‡		
Subject group	A	B	C	D	E	...
No. of Subjects	78	53	78	74	162	...
Age, y	75 ± 9	73 ± 9	66 ± 7	72 ± 8	73 ± 11	$F_4 = 11.0, P < .001$; $C < A, B, D,$ and E §
Female sex, %	74	66	71	70	61	$\chi^2_4 = 5.3, P = .26$
Education, y	9.9 ± 2.0	9.3 ± 2.2	9.8 ± 2.0	9.2 ± 2.1	9.5 ± 2.0	$F_4 = 0.6, P = .65$
First-degree relatives						
Total No.	557	392	487	500	1066	...
No. with known age or age of death	520	347	465	440	1020	...
Age, y	60 ± 20	59 ± 19	56 ± 20	58 ± 20	58 ± 20	$F_4 = 2.6, P = .03$; $C < A$ §
Female sex, %	51	48	50	45	51	$\chi^2_4 = 4.3, P = .36$
Deceased	252	164	183	192	445	...
Age, y	65 ± 22	63 ± 20	67 ± 19	66 ± 21	66 ± 22	$F_4 = 0.8, P = .52$
Female sex, %	47	45	45	44	45	$\chi^2_4 = 0.4, P = .99$
Living	268	183	282	248	575	...
Age, y	56 ± 17	55 ± 17	49 ± 18	52 ± 17	53 ± 17	$F_4 = 5.9, P = .001$; $C < A, B,$ and E §
Female sex, %	56	54	55	46	55	$\chi^2_4 = 7.4, P = .12$
Interviewed	143	97	148	144	243	...
Age, y	55 ± 15	54 ± 17	49 ± 17	52 ± 16	51 ± 16	$F_4 = 3.4, P = .009$; $C < A$ §
Female sex, %	58	56	60	51	63	$\chi^2_4 = 5.6, P = .23$
Education, y	10.2 ± 2.3	11.0 ± 2.5	10.1 ± 2.1	9.9 ± 2.4	10.6 ± 2.4	$F_4 = 3.1, P = .02$ ¶
Unavailable but living	125	86	134	104	332	...
Age, y	57 ± 18	56 ± 17	50 ± 19	52 ± 17	54 ± 18	$F_4 = 1.0, P = .43$
Female sex, y%	54	51	49	39	50	$\chi^2_4 = 5.8, P = .22$

*Data are given as the mean ± SD unless otherwise indicated. ANOVA indicates analysis of variance; AD, Alzheimer disease; and ellipses, data not applicable.

†Age at onset is 60 years or younger.

‡Age at onset is older than 60 years.

§Post hoc comparisons: $P < .05$ (Scheffé test, Bonferroni corrected).

||Time in school.

¶Post hoc comparisons: no significant group differences ($P > .10$; Scheffé test, Bonferroni corrected).

compared with family history information (HR, 2.3; $P < .001$), but this effect disappeared if an interaction term including source of data and sex was used. This term indicated that direct interview diagnoses of PPD were more sensitive than family history diagnoses in women (HR, 2.91; $P < .001$) but not in men. When the analyses were stratified by source of information, the diagnosis of the patient remained the only predictor for risk of PPD in relatives (for interviewed subjects vs those diagnosed by family history, $\chi^2_4 = 11.4$ [$P = .02$] vs $\chi^2_4 = 10.6$ [$P = .03$]).

Mantel-Haenszel statistics revealed similar results: the familial loads of PPD were different for the various groups of relatives (log-rank test $\chi^2_4 = 12.9$; $P = .01$). Relatives of patients with AD showed increased risk of PPD compared with relatives of probands with EOD or LOD and controls (log-rank tests: AD vs EOD, $\chi^2 = 5.65$, $P = .02$; AD vs LOD, $\chi^2 = 4.41$, $P = .04$; and AD vs controls, $\chi^2 = 14.64$, $P < .001$). Relatives of comorbid patients also showed increased risk of PPD compared with control relatives (log-rank $\chi^2 = 9.45$; $P = .002$) and, suggestively, with relatives of probands with EOD and LOD (log-rank $\chi^2 = 3.52$ [$P = .06$] and 2.37 [$P = .12$], respectively). Patients with AD and with comorbid AD/depression, therefore, appear relatively distinct from patients with EOD and with LOD and from controls for their familial loads of PPD. Relatives of patients with AD and of patients with AD/depression had indistinguishable familial loads of PPD ($\chi^2 = 0.10$; $P = .76$), as did relatives of patients with LOD

and EOD and control subjects (LOD vs controls, $\chi^2 = 1.24$; EOD vs controls, $\chi^2 = 0.62$; and LOD vs EOD, $\chi^2 = 0.06$; $P \geq .27$ for all).

DEPRESSION IN RELATIVES

Figure 2 shows Kaplan-Meier curves for depression-free survival by relatives of patients and controls. Cox proportional hazards regression analysis again revealed that proband diagnosis significantly influenced relatives' risk of depression (Wald $\chi^2_4 = 14.5$; $P = .006$). For relatives of patients with EOD vs control relatives, the HR was 1.64 ($P = .04$), whereas for relatives of patients with AD, the HR was 0.57 ($P = .05$). Relatives of probands with LOD and with comorbid AD/depression showed risks of depression similar to control relatives ($\chi^2 = 0.88$ and 0.01, respectively; $P \geq .34$). Female relatives showed more depression than male relatives (HR, 1.93; $P < .001$). Directly interviewed relatives also showed an apparently increased risk vs those assessed only by family history information (HR, 2.2; $P < .001$), but this effect did not vary substantially across proband groups. A significant interaction between sex and source of data ($\chi^2 = 7.33$; $P = .007$) suggested that the difference in depression between female and male relatives was greater in relatives assessed by family history than in those who were interviewed (HR, 2.13 [$P = .008$] and 1.32 [$P = .07$], respectively). Interaction terms between proband diag-

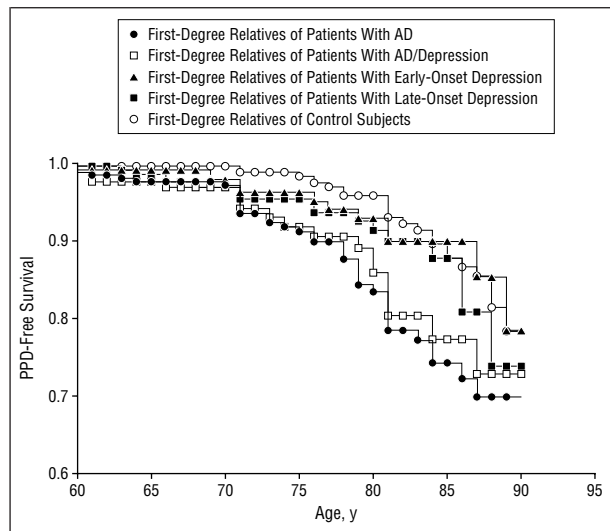


Figure 1. Primary progressive dementia (PPD)–free survival up to the age of 90 years in first-degree relatives with known age or age of death by lifetime diagnosis of patients and control subjects, ie, in 520 relatives of 78 subjects with Alzheimer disease (AD), in 347 relatives of 53 subjects with comorbid AD/depression, in 465 relatives of 78 subjects with early-onset depression, in 440 relatives of 74 subjects with late-onset depression, and in 1020 relatives of 162 controls.

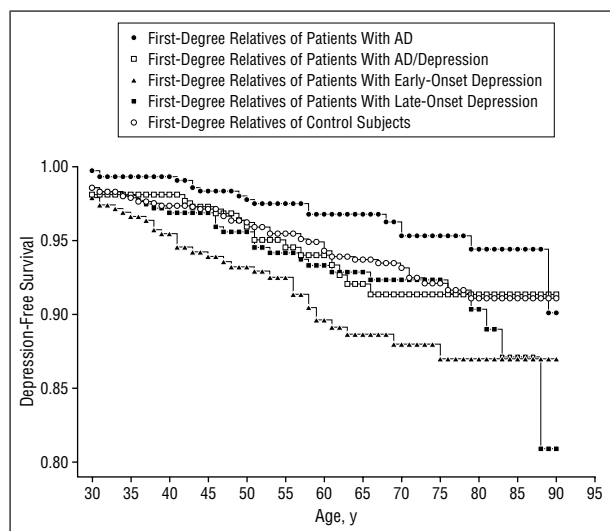


Figure 2. Depression-free survival up to the age of 90 years in first-degree relatives with known age or age of death by lifetime diagnosis of patients and control subjects, ie, in 520 relatives of 78 subjects with Alzheimer disease (AD), in 347 relatives of 53 subjects with comorbid AD/depression, in 465 relatives of 78 subjects with early-onset depression, in 440 relatives of 74 subjects with late-onset depression, and in 1020 relatives of 162 controls.

nosis and sex, or between diagnosis and source of data, were not statistically significant ($\chi^2_4=8.6$ [$P=.07$] and 6.8 [$P=.14$], respectively).

Mantel-Haenszel statistics supported these results. The familial load of depression differed significantly by proband diagnoses (log-rank $\chi^2_4=14.5$; $P=.006$). Relatives of patients with EOD showed the most depression compared with relatives of patients with AD and controls (log-rank $\chi^2=14.1$ and 6.30 , respectively; $P\leq .01$). However, comparisons of relatives of probands with EOD vs LOD or comorbid AD/depression were inconclusive (log-rank $\chi^2=1.41$ [$P=.23$] and 2.45 [$P=.12$],

respectively). Relatives of probands with AD showed the lowest occurrence of depression (log-rank tests: AD vs controls, $\chi^2=3.36$, $P=.07$; AD vs EOD, $\chi^2=14.1$, $P<.001$; AD vs LOD, $\chi^2=6.72$, $P=.01$; and AD vs comorbid AD/depression, $\chi^2=3.42$, $P=.06$). Patients with LOD, comorbid AD/depression, and controls did not differ in their familial loads of depression (LOD vs controls, $\chi^2=1.12$, $P=.29$; comorbid patients vs controls, $\chi^2=0.06$, $P=.81$; and LOD vs comorbid AD/depression, $\chi^2=0.35$, $P=.55$). However, relatives of patients with LOD showed a small, but significant, increase in LOD after the age of 80 years. Of 64 relatives of patients with LOD, 4 (6%) developed depression after this age, as contrasted with 2 (2%) of 85 relatives of persons with AD, 1 (2%) of 65 such relatives of persons with EOD, and 0 of the 145 control relatives and the 51 relatives of probands with comorbid AD/depression ($\chi^2_4=11.5$; $P=.02$).

COMMENT

In keeping with our first hypothesis, we found an increased risk of PPD in the relatives of patients with AD and of patients with comorbid AD/depression, compared with relatives of controls, but no such increase in relatives of probands with EOD. The observed familial aggregation of PPD is in full agreement with several earlier studies.^{12-14,16-20} Like several other family studies on EOD,²¹⁻²⁴ we also found increased risk of depression in relatives of probands with EOD vs relatives of controls, but there was no such effect in relatives of patients with AD. These results suggest that AD and EOD are psychiatric disorders that share few, if any, common genetic antecedents.

In contrast with Maier and colleagues,²⁵ and in contrast with predictions of our second and third hypotheses, we found that probands with LOD did not show significant familial loading of either depression or PPD when compared with controls. Their relatives' occurrence of depression tended to be lower than in relatives of patients with EOD, and their load of PPD was substantially lower than in relatives of patients with AD. These results do not support the notion that LOD shares familial factors with either AD or EOD. There is, nevertheless, a slight but significant increase in the loading of LOD in the relatives of probands with LOD that is evident after the age of 80 years. These findings suggest that unique familial factors may predispose to the development of LOD.

Our fourth hypothesis was confirmed only in part, in that patients with comorbid AD/depression showed familial loading of PPD similar to that in patients with uncomplicated AD, but they showed no substantial increase in familial risk of depression.

The reduced risk of depression in relatives of patients with AD compared with relatives of controls was unexpected. This difference persisted when we restricted the control group to those free of disease. We conjecture that some protective factor(s) might reduce the risk of depression in these relatives of probands with AD or, alternatively, that our patients with AD and without comorbid depression might represent individuals selected for the absence of familial risk factors for depres-

sion. We favor the latter interpretation because it is consistent with several family studies³⁷⁻³⁹ showing an increased risk of depression in relatives of subjects with comorbid AD/depression compared with relatives of patients with uncomplicated AD. The similar observed risks of depression in relatives of patients with comorbid AD/depression and of controls might reflect the limited effect of familial factors on relatives' risk of depression, rendering difficult their detection in a comparison with population controls.

Selection bias and awareness bias are potential problems in this work, as in all family studies. We succeeded in administering a direct interview to only 775 of 3002 relatives, representing 49.8% of those living and 25.8% of the entire sample. Our observed proportion of missing data (210 relatives, or 7.0%) would be unlikely to bear substantially on results of survival analyses. To examine possible differences in the reported occurrence of illness in direct interview vs family history data, we compared results in a subsample of the first 531 relatives studied. Except for the relatives of controls,⁴⁰ we saw little effect of proband's diagnostic group on relatives' availability for direct interview. Consequently, and because the relatives' groups had comparable demographic characteristics, we doubt that differential participation had any undue influence on comparisons of disorders in the different relative groups.

The variables that affected the validity of diagnoses that relied on family history were disorder in the informant, age, and sex. Accordingly, we deleted information provided by diseased informants to prevent spurious familial aggregation. Differences in the age distribution of relatives were intrinsically considered through the use of survival analysis, while sex and the source of information were controlled by including them as covariates. All analyses, including those stratified by source of information (direct interview vs family history) and the use of a design that compared several groups of relatives (not only specific proband vs control relatives), led to consistent results. We are, therefore, confident that our findings are valid.

Our a priori power calculations relied on earlier studies that had compared familial loads of dementia in patients with AD and controls, and of depression in probands with EOD and controls. Accordingly, small differences between disorders with intermediate familial loads would not be expected to reach statistical significance. We, therefore, cannot exclude the possibility of small increases of the familial loadings of PPD or depression in relatives of subjects with LOD.

The observed familial aggregation of psychiatric disorders may be explained by shared environmental factors and by genetic risk factors that influence the illness susceptibility.⁵⁷ Broadly speaking, different disorders are likely to vary in the degree to which genetic and shared environmental factors contribute to their familial aggregation. Even so, genetic vulnerability factors are probably more important than shared environment when onset is characteristically in late life, as in AD and LOD. It is also likely that these prevalent late-onset conditions have heterogeneous causes and tend mostly to result from complex interactions of common genetic and environ-

mental risk factors. These arguments should not detract substantially from the reported results and conclusions, which were based on comparisons across multiple groups of relatives. We acknowledge that our study could have been improved with inclusion of APOE (apolipoprotein E) genotypes for our probands and their relatives. Such genotypes were not included herein because we did not collect blood samples at the beginning of the study, and because some interviewed family members were reluctant to provide blood samples. Despite these limitations, we suggest that this is the largest and most comprehensive study yet published on familial aggregation and coaggregation of the common psychiatric disorders of old age. Our results suggest broadly that a family history of AD, EOD, and LOD all indicate an increased familial risk for the same, but not other, psychogeriatric disorders.

Accepted for publication August 16, 2000.

This study was supported by grant HE 2318/1-2 from the German Research Foundation.

Corresponding author and reprints: Reinhard Heun, MD, Department of Psychiatry, University of Bonn, Venusberg, D-53105 Bonn, Germany (e-mail: heun@uni-bonn.de).

REFERENCES

1. Copeland JRM. Depression of older age: origins of the study. *Br J Psychiatry*. 1999;174:304-306.
2. Wittchen H-U, Knäuper B, Kessler RC. Lifetime risk of depression. *Br J Psychiatry*. 1994;165(suppl 26):16-22.
3. O'Connor DW, Pollitt PA, Roth M. Coexisting depression and dementia in a community survey of the elderly. *Int Psychogeriatr*. 1990;2:45-53.
4. O'Connor DW, Pollitt PA, Roth M, Brook CPB, Reiss BB. Memory complaints and impairment in normal, depressed, and demented elderly persons identified in a community survey. *Arch Gen Psychiatry*. 1990;47:224-227.
5. Deijen JB, Orlebeke JF, Rijdsdijk FV. Effect of depression on psychomotor skills, eye movements and recognition-memory. *J Affect Disord*. 1993;29:33-40.
6. Lichtenberg PA, Ross T, Millis SR, Manning CA. The relationship between depression and cognition in older adults: a cross-validation study. *J Gerontol B Psychol Sci Soc Sci*. 1995;50:P25-P32.
7. Yaffe K, Blackwell T, Gore R, Sands L, Reus V, Browner WS. Depressive symptoms and cognitive decline in nondemented elderly women: a prospective study. *Arch Gen Psychiatry*. 1999;56:425-430.
8. Burns A, Jacoby R, Levy R. Psychiatric phenomena in Alzheimer's disease, III: disorders of mood. *Br J Psychiatry*. 1990;157:81-86.
9. Newman SC. The prevalence of depression in Alzheimer's disease and vascular dementia in a population sample. *J Affect Disord*. 1999;52:169-176.
10. Emery VO, Oxman TE. Update on the dementia spectrum of depression. *Am J Psychiatry*. 1992;149:305-317.
11. Kendell RE. Clinical validity. *Psychol Med*. 1989;19:45-55.
12. Heston LL, Mastri AR, Anderson VE, White J. Dementia of the Alzheimer type. *Arch Gen Psychiatry*. 1981;38:1085-1090.
13. Heyman A, Wilkinson WE, Hurwitz BJ, Schmechel D, Sigmond AH, Weinberg T, Helms MJ, Swift M. Alzheimer's disease: genetic aspects and associated clinical disorders. *Ann Neurol*. 1983;14:507-515.
14. Breitner JCS, Folstein MF. Familial Alzheimer dementia: a prevalent disorder with specific clinical features. *Psychol Med*. 1984;14:63-80.
15. Breitner JCS, Folstein MF, Murphy EA. Familial aggregation in Alzheimer dementia-I: a model for the age-dependent expression of an autosomal dominant gene. *J Psychiatr Res*. 1986;20:31-43.
16. Huff FJ, Auerbach J, Chakravarti A, Boller F. Risk of dementia in relatives of patients with Alzheimer's disease. *Neurology*. 1988;38:786-790.
17. Farrer LA, O'Sullivan DM, Cupples LA, Growdon JH, Myers H. Assessment of genetic risk for Alzheimer's disease among first-degree relatives. *Ann Neurol*. 1989;25:485-493.
18. Korten AE, Jorm AF, Henderson AS, Broe GA, Creasey H, McCusker E. Assessing the risk of Alzheimer's disease in first-degree relatives of Alzheimer's disease cases. *Psychol Med*. 1993;23:915-923.

19. Silverman JM, Li G, Zaccario ML, Smith CJ, Schmeidler J, Mohs RC, Davis KL. Patterns of risk in first-degree relatives of patients with Alzheimer's disease. *Arch Gen Psychiatry*. 1994;51:577-586.
20. Silverman JM, Raiford K, Edland S, Fillenbaum G, Morris JC, Clark CM, Kukull W, Heyman A. The Consortium to Establish a Registry for Alzheimer's Disease (CERAD): part VI. *Neurology*. 1994;44:1253-1259.
21. Gershon ES, Hamovit J, Guroff JJ, Dibble E, Leckman JF, Sceery W, Targum SD, Nurnberger JI Jr, Goldin LR, Bunney WE Jr. A family study of schizoaffective, bipolar I, bipolar II, unipolar, and normal control probands. *Arch Gen Psychiatry*. 1982;39:1157-1167.
22. Weissman MM, Kidd KK, Prusoff BA. Variability in rates of affective disorders in relatives of depressed and normal probands. *Arch Gen Psychiatry*. 1982;39:1397-1403.
23. Heun R, Maier W. The distinction of bipolar II disorder from bipolar I and recurrent unipolar depression: results of a controlled family study. *Acta Psychiatr Scand*. 1993;87:279-284.
24. Winokur G, Coryell W, Keller M, Endicott J, Leon A. A family study of manic-depressive (bipolar I) disease: is it a distinct illness separable from primary unipolar depression? *Arch Gen Psychiatry*. 1995;52:367-373.
25. Maier W, Lichtermann D, Minges J, Heun R, Hallmayer J, Klingler T. Unipolar depression in the aged: determinants of familial aggregation. *J Affect Disord*. 1991;23:53-61.
26. Hopkinson G. A genetic study of affective illness in patients over 50. *Br J Psychiatry*. 1964;110:244-254.
27. Bland RC, Newman SC, Orn H. Recurrent and nonrecurrent depression. *Arch Gen Psychiatry*. 1986;43:1085-1089.
28. Herrmann N, Lief S, Silberfeld M. The effect of age of onset on depression in the elderly. *J Geriatr Psychiatry Neurol*. 1989;2:182-187.
29. Conwell Y, Nelson JC, Kim KM, Mazure CM. Depression in late life: age of onset as marker of a subtype. *J Affect Disord*. 1989;17:189-195.
30. Greenwald BS, Kramer-Ginsberg E. Age-at-onset in geriatric depression: relationship to clinical variables. *J Affect Disord*. 1988;15:61-68.
31. Brodaty H, Peters K, Boyce P, Hickie I, Parker G, Mitchell P, Wilhelm K. Age and depression. *J Affect Disord*. 1991;23:137-149.
32. Van Ojen R, Hooijer C, Bezember D, Jonker C, Lindeboom J, Van Tilburg W. Late-life depressive disorder in the community, II: the relationship between psychiatric history, MMSE and family history. *Br J Psychiatry*. 1995;166:316-319.
33. Fahim S, van Duijn CM, Baker FM, Launer L, Breteler MMB, Schudel WJ, Hofman A. A study of familial aggregation of depression, dementia and Parkinson's disease. *Eur J Epidemiol*. 1998;14:233-238.
34. Martin RL, Gerteis G, Gabrielli WF Jr. A family-genetic study of dementia of Alzheimer type. *Arch Gen Psychiatry*. 1988;45:894-900.
35. Li G, Shen YC, Li YT, Chen CH, Zhou YW, Silverman JM. A case-control study of Alzheimer's disease in China. *Neurology*. 1992;42:1481-1488.
36. Lawlor BA, Sunderland T, Mellow AM, Hill JL, Newhouse PA, Murphy DL. Family history of depression and alcoholism in Alzheimer patients and age-matched controls. *Int J Geriatr Psychiatry*. 1989;4:327-331.
37. Pearlson GD, Ross CA, Lohr WD, Rovner BW, Chase GA, Folstein MF. Association between family history of affective disorder and the depressive syndrome of Alzheimer's disease. *Am J Psychiatry*. 1990;147:452-456.
38. Strauss ME, Ogrocki PK. Confirmation of an association between family history of affective disorder and the depressive syndrome in Alzheimer's disease. *Am J Psychiatry*. 1996;153:1340-1342.
39. Lyketsos CG, Tune LE, Pearlson G, Steele C. Major depression in Alzheimer's disease: an interaction between gender and family history. *Psychosomatics*. 1996;37:380-384.
40. Heun R, Burkart M, Maier W. Selection biases during recruitment of patients and relatives for a family study in the elderly. *J Psychiatr Res*. 1995;29:491-504.
41. Breitner JCS, Murphy EA, Woodbury MA. Case-control studies of environmental influences in diseases with genetic determinants, with an application to Alzheimer's disease. *Am J Epidemiol*. 1991;133:246-256.
42. Kendler KS. The super-normal control group in psychiatric genetics: possible artifactual evidence for coaggregation. *Psychiatr Genet*. 1990;1:45-53.
43. Weissman MM, Merikangas KR, John K, Wickramaratne P, Prusoff BA, Kidd KK. Family-genetic studies of psychiatric disorders: developing technologies. *Arch Gen Psychiatry*. 1986;43:1104-1116.
44. Tsuang MT, Fleming JA, Kendler KS, Gruenberg AS. Selection of controls for family studies. *Arch Gen Psychiatry*. 1988;45:1006-1008.
45. World Health Organization. *Composite International Diagnostic Interview*. Geneva, Switzerland: Division of Mental Health, World Health Organization; 1990.
46. American Psychiatric Association. *Diagnostic and Statistical Manual of Mental Disorders, Revised Third Edition*. Washington, DC: American Psychiatric Association; 1987.
47. Zaudig M, Mittelhammer J, Hiller W, Pauls A, Thora C, Morinigo A, Mombour W. SIDAM: a structured interview for the diagnosis of dementia of the Alzheimer type, multi-infarct dementia and dementias of other aetiology according to ICD-10 and DSM-III-R. *Psychol Med*. 1991;21:225-236.
48. Folstein MF, Folstein SE, McHugh PR. "Mini-Mental State": a practical method for grading the cognitive state of patients for the clinician. *J Psychiatr Res*. 1975;12:189-198.
49. Andreasen NC, Endicott J, Spitzer RL, Winokur G. The family history method using diagnostic criteria: reliability and validity. *Arch Gen Psychiatry*. 1977;34:1229-1235.
50. Silverman JM, Breitner JCS, Mohs RC, Davis KL. Reliability of the family history method in genetic studies of Alzheimer's disease and related dementias. *Am J Psychiatry*. 1986;143:1279-1282.
51. Leckman JF, Sholomskas D, Thompson WD, Belanger A, Weissman MM. Best estimate of lifetime psychiatric diagnosis. *Arch Gen Psychiatry*. 1982;39:879-883.
52. Heun R, Müller H. Interinformant reliability of family history information on psychiatric disorders in relatives. *Eur Arch Psychiatry Clin Neurosci*. 1998;248:104-109.
53. Heun R, Maier W, Müller H. Subject and informant variables affecting family history diagnoses of depression and dementia. *Psychiatry Res*. 1997;1:175-180.
54. Kendler KS, Silberg JL, Neale MC, Kessler RC, Heath AC, Eaves LJ. The family history method: whose psychiatric history is measured? *Am J Psychiatry*. 1991;148:1501-1504.
55. Cox DR, Oakes D. *Analysis of Survival Data: Monographs on Statistics and Applied Probability 21*. London, England: Chapman & Hall; 1984.
56. Mantel N, Haenszel W. Statistical aspects of the analysis of data from retrospective studies of disease. *J Natl Cancer Inst*. 1959;22:719-748.
57. Khoury MJ, Beaty TH, Cohen BH. *Fundamentals of Genetic Epidemiology: Monographs in Epidemiology and Biostatistics*. Vol 19. New York, NY: Oxford University Press Inc; 1993.