

# Alternative Splicing, Methylation State, and Expression Profile of Tropomyosin-Related Kinase B in the Frontal Cortex of Suicide Completers

Carl Ernst, MSc; Vesselina Deleva, MSc; Xiaoming Deng, MD; Adolfo Sequeira, PhD; Amanda Pomarenski, BSc; Tim Klempan, PhD; Neil Ernst, MSc; Remi Quirion, PhD; Alain Gratton, PhD; Moshe Szyf, PhD; Gustavo Turecki, MD, PhD

**Context:** Although most of the effort to understand the neurobiology of depressive states and suicide has focused on neuronal processes, recent studies suggest that astroglial dysfunction may play an important role. A truncated variant of the tropomyosin-related kinase B (TrkB.T1) is expressed in astrocytes, and brain-derived neurotrophic factor–TrkB signaling has been linked to mood disorders.

**Objective:** To test the hypothesis that TrkB.T1 expression is downregulated in suicide completers and that this downregulation is mediated by an epigenetic process.

**Design:** Postmortem case-control study.

## Patients, Setting, and Main Outcome Measures:

Thirty-nine French Canadian men underwent screening at the Douglas Hospital Research Institute using the HG-U133 plus 2 microarray chip. Nine frontal cortical regions and the cerebellum were assessed using a microarray screening approach for extreme expression differences across subjects and a conventional screening approach. Results were validated by quantitative polymerase chain reaction and Western blot analyses. Animal ex-

periments were performed to control for drug and alcohol effects. Genetic and epigenetic studies were performed by means of direct sequencing and bisulfite mapping.

**Results:** We found that 10 of 28 suicide completers (36%) demonstrated significant decreases in different probe sets specific to TrkB.T1 in Brodmann areas 8 and 9. These findings were generalizable to other frontal regions but not to the cerebellum. The decrease in TrkB expression was specific to the T1 splice variant. Our results were not accounted for by substance comorbidity or by reduction in astrocyte number. We found no effect of genetic variation in a 2500–base pair promoter region or at relevant splice junctions; however, we detected an effect of methylation state at particular CpG dinucleotides on TrkB.T1 expression.

**Conclusion:** A reduction of TrkB.T1 expression in the frontal cortex of a subpopulation of suicide completers is associated with the methylation state of the promoter region.

*Arch Gen Psychiatry.* 2009;66(1):22-32

**Author Affiliations:** McGill Group for Suicide Studies (Mr C. Ernst, Ms Deleva, and Drs Deng, Sequeira, Klempan, and Turecki) and Departments of Neurology and Neurosurgery (Mr C. Ernst, Ms Pomarenski, and Drs Klempan, Quirion, Gratton, and Turecki), Psychiatry (Drs Quirion, Gratton, and Turecki), and Pharmacology and Therapeutics (Dr Szyf), McGill University, and Department of Psychiatry, Douglas Hospital Research Institute (Dr Turecki), Montreal, Quebec, Canada; and Department of Computer Science, University of Toronto, Toronto, Ontario, Canada (Mr N. Ernst).

**S**UICIDE IS MOST OFTEN ASSOCIATED with depressed mood and hopelessness and is a leading cause of death in many regions of the world.<sup>1-6</sup>

Although much of the effort to understand the biological mechanisms of these mood states has centered on neuronal processes, some recent studies have suggested that astroglial dysfunction may play an important role.<sup>7-10</sup> Astrocytes, the most prevalent cell type in the central nervous system, are involved in synaptic communication<sup>11</sup>; express receptor subtypes for serotonin,  $\gamma$ -aminobutyric acid, glutamate, and dopamine<sup>12</sup>; and are capable of rapid, long-range signaling throughout the brain.<sup>13</sup> The role of astrocytes in brain homeostasis, metabolism, and injury has been

extensively documented.<sup>14</sup> More recently it has become clear that astrocytes play an important role in many brain functions<sup>15</sup> and may be involved in mood and other neurological disorders.<sup>16</sup>

A truncated splice variant of the tropomyosin-related kinase B (TrkB.T1) is the only TrkB isoform expressed in astrocytes under normal conditions, and brain-derived neurotrophic factor (BDNF)–TrkB signaling has been linked to major depression and suicide.<sup>17-20</sup> The TrkB.T1 variant is incapable of catalytic activity<sup>21,22</sup> and is known to mediate BDNF-induced calcium signaling through astrocyte networks.<sup>18</sup> It is upregulated in cultured astrocytes in response to antidepressant treatment,<sup>23</sup> and a number of microarray studies have linked decreased

TRKB gene (GenBank AF410902) (also known as the *NTRK2* gene) expression in human cortex to mood disorders,<sup>24,25</sup> although the specific TrkB variant identified in these studies was not presented.

In this study, we screened microarray data for extreme expression values and found severely decreased expression of TrkB.T1 in 10 of 28 suicide cases (36%). When we analyzed microarray data following more conventional methods, we still found TrkB.T1 to be significantly downregulated in the suicide group. These findings were present in the frontal cortex and were specific to the T1 variant because we could detect no difference in expression level in the cerebellum or in other TrkB isoforms. We attempted to explain the mechanism of this finding by analyzing the TrkB promoter region first for genetic variation and, second, for methylation patterns. We found a significant association between methylation at 2 specific CpG dinucleotides in the promoter region and decreased TrkB.T1 expression in the frontal cortex of suicide completers.

## METHODS

Brain tissue used in this study was obtained from the Quebec Suicide Brain Bank and selected for limited postmortem intervals (PMIs) (not exceeding 48 hours<sup>26,27</sup>). Subjects were French Canadian in origin and were considered members of a homogeneous population with a well-identified founder effect.<sup>28</sup> All individuals were male, and the groups were matched for age, PMI, and pH. All subjects died suddenly and could not have undergone any resuscitation procedures or other type of medical intervention, and thus did not have prolonged agonal states. Twenty-eight suicide completers and 11 control subjects were recruited for this study. Brodmann areas (BAs) 4, 6, 10, 11, 44, 45, 46, and 47; the region encompassing BA 8 and 9 (BA 8/9) from the left hemisphere (gray matter only); and the cerebellum were carefully dissected. Sectioning was performed at 4°C, and sections were snap frozen in isopentane at -80°C. Different numbers of sections were taken per BA, and therefore the sections used for microarray analysis were adjacent to but different from those used for biological replication by semiquantitative polymerase chain reaction (PCR), Western blot, and epigenetic analysis.

For identification and dissection of neuroanatomical regions, we relied on experienced histopathologists using reference neuroanatomical maps.<sup>29,30</sup> Briefly, we used gyri and sulci to landmark specific frontal cortical areas and removed gray matter tissue blocks. In all cases, 1-cm<sup>3</sup> human tissue blocks were paraffin embedded, cryostat sectioned, slide mounted, and examined for any signs of disease by 2 independent pathologists in at least 3 different brain regions. All sections were cryostat cut at 15 µm. Brain tissue was assessed for any obvious signs of abnormality.

We used strict inclusion criteria to ensure a sample as homogeneous as possible. The following constituted our inclusion criteria for suicide completers: (1) The subject must be white and of French Canadian origin. This was assessed systematically by verifying that both sets of grandparents of the subject were born in the province of Quebec. (2) The subject must be male. (3) The PMI must be less than 48 hours.<sup>26,27</sup> The exclusion criterion for suicide completers was the presence of schizophrenia or other psychotic disorders at any point in the life of the subject. Inclusion criteria for controls were the same as those for suicide completers, with a further inclusion criterion of sudden death without a prolonged agonal state. Medical records, family reports, and interviews with the best possible informant were screened to en-

sure that the individual had not experienced a prolonged agonal state. Most controls died in motor vehicle crashes or owing to cardiac arrest. Case reports for each person were prepared by way of psychological autopsy performed by trained clinicians and physicians with the best possible informants, as reported elsewhere.<sup>31</sup> Psychological autopsies were completed with medical records, and a consensus diagnosis was reached by a panel of clinicians (including G.T.). Relevant clinical information for all subjects is listed in **Table 1**.

We propose a different approach to screen microarray data that accounts for the likely heterogeneous nature of psychiatric diseases.<sup>32</sup> This method, termed *extreme values analysis* (EVA), screens microarray data individual by individual in search of any extreme values that may signify some possible abnormality. Given the lack of replication in psychiatric genetic research,<sup>33</sup> it seems plausible that an investigative approach focusing on subgroup rather than on mean group effects is reasonable. In psychiatric research, an approach that subdivides the experimental sample has been applied,<sup>34</sup> and several promising findings in schizophrenia,<sup>35</sup> autism,<sup>36</sup> and mental retardation<sup>37</sup> have all been identified through genome-wide screening on a subject-by-subject basis. The rationale for this approach is the fact that etiological heterogeneity is likely to occur in psychiatric conditions, including suicide.<sup>38</sup> Identification of extreme values or outlier detection has been used successfully with microarray data, and EVA represents a slight modification of previously applied methods.<sup>39-41</sup> Specifically, EVA uses the standard deviation and fold change from the mean, whereas the other methods use percentile rankings. Briefly, all methods normalize microarray data and examine individual subject scores outside a particular range, compared across experimental and control groups. The EVA protocol is fully described in supplemental material on the authors' Web site (<http://www.douglasrecherche.qc.ca/suicide/>).

Methods for microarray analysis, quantitative PCR, Western blot analysis, DNA sequencing and methylation mapping of the TrkB promoter, and luciferase experiments for promoter function can all be found in the supplemental material on the authors' Web site (all primers can be found in Table S1). Full protocols for animal behavior experiments to control for the effects of alcohol and other drugs can also be found in the supplemental material.

We used commercially available software to perform microarray analyses (Avadis; Strand Life Sciences, Carlsbad, California) and all other statistical comparisons (SPSS Inc, version 15.0; SPSS, Chicago, Illinois). Unless otherwise indicated, all data are reported as mean (SEM).

## RESULTS

**Figure 1** shows a flowchart outlining the experimental design of this study.

### BA 8/9 EXTREME VALUES ANALYSIS

We initially focused on the dorsolateral prefrontal cortex, BA 8/9, because this brain region is thought to play an important role in the neurobiological mechanism of suicide.<sup>42-44</sup> The data were log<sub>2</sub> transformed, the standard deviation for each probe set was ranked according to the standard deviation value, and the top 1000 probe sets were kept. After this first step, we screened all remaining probe sets to find at least 1 suicide completer with a 3-fold deviation from the control mean. Two hundred eighty-seven probe sets had at least 1 suicide completer with an

**Table 1. Relevant Clinical Information in 39 Individuals Studied**

Group	Cause of Death	DSM-IV Diagnosis	Toxicological Findings <sup>a</sup>	PMI, h	pH	Age, y
Control	Motor vehicle crash	Alcohol dependence	Alcohol	15	6.83	51
Control	Motor vehicle crash	...	...	29.5	6.67	31
Control	Cardiac arrest	...	...	20.5	6.55	27
Control	Myocardial infarction	...	...	19.5	6.42	46
Control	Motor vehicle crash	...	...	27	6.32	28
Control	Motor vehicle crash	...	...	24	6.0	41
Control	Cardiac arrest	...	...	24	6.42	21
Control	Cardiac arrest	Alcohol dependence	...	24	6.67	31
Control	Cardiac arrest	Alcohol abuse	...	12	6.49	47
Control	Cardiac arrest	...	...	31	6.34	58
Control	Motor vehicle crash	...	...	24	6.75	55
S <sub>T1</sub>	Asphyxiation	OCD, alcohol dependence	...	21	6.59	21
S <sub>T1</sub>	Hanging	...	...	18	6.68	33
S <sub>T1</sub>	Hanging	MDD	Cocaine	34	6.0	26
S <sub>T1</sub>	Hanging	MDD, alcohol dependence	...	31	6.61	35
S <sub>T1</sub>	Hanging	MDD, alcohol dependence	...	29	6.3	53
S <sub>T1</sub>	Hanging	MDD	...	29.5	6.17	19
S <sub>T1</sub>	Self-inflicted gunshot wound	...	...	36	6.66	36
S <sub>T1</sub>	Hanging	MDD, alcohol abuse	...	32	6.57	49
S <sub>T1</sub>	Hanging	...	...	27	6.77	29
S <sub>T1</sub>	Overdose	BPD I, alcohol dependence	Cocaine	30	6.68	24
S <sub>NoT1</sub>	Hanging	...	...	32.5	6.27	31
S <sub>NoT1</sub>	Hanging	Alcohol dependence, cocaine dependence	Alcohol	23	6.0	38
S <sub>NoT1</sub>	Hanging	...	...	25	6.54	36
S <sub>NoT1</sub>	Self-inflicted gunshot wound	MDD, pathological gambling	...	20.5	6.57	45
S <sub>NoT1</sub>	Hanging	MDD	...	20	6.71	24
S <sub>NoT1</sub>	Hanging	MDD, alcohol dependence	...	11.5	6.35	22
S <sub>NoT1</sub>	Hanging	MDD, alcohol dependence	Alcohol	20	6.84	28
S <sub>NoT1</sub>	Hanging	MDD, panic without agoraphobia	...	22	6.96	40
S <sub>NoT1</sub>	Carbon monoxide poisoning	MDD	...	30	6.6	53
S <sub>NoT1</sub>	Self-inflicted gunshot wound	Alcohol dependence	...	21	6.12	51
S <sub>NoT1</sub>	Hanging	MDD	...	25.5	6.6	39
S <sub>NoT1</sub>	Overdose	MDD	Fluoxetine	19	6.0	39
S <sub>NoT1</sub>	Carbon monoxide poisoning	MDD	...	27	7.28	18
S <sub>NoT1</sub>	Hanging	MDD	...	24	6.64	22
S <sub>NoT1</sub>	Hanging	...	...	36	6.73	25
S <sub>NoT1</sub>	Hanging	...	Valproic acid	46	6.75	72
S <sub>NoT1</sub>	Hanging	BPD I	...	16	6.48	28
S <sub>NoT1</sub>	Hanging	BPD I	Lithium	30	6.71	51

Abbreviations: BPD I, bipolar I disorder; MDD, major depressive disorder; OCD, obsessive-compulsive disorder; PMI, postmortem interval; S<sub>NoT1</sub>, suicide completer without low expression of a truncated variant of tropomyosin-related kinase B (TrkB1.T1); S<sub>T1</sub>, suicide completer with low expression of TrkB1.T1; ellipses, none.

<sup>a</sup>Indicates substances detected in a toxicological screen at the time of death.

intensity value that was 3-fold different from the control mean. To account for variation in the control means, we removed any probe sets in which the intensity value from the suicide completer that was 3-fold from the control mean was not more than 1.5 SDs from the control mean; 99 probe sets had at least 1 suicide completer with such an extreme expression value (supplemental Table S2).

Two of these 99 probe sets were specific to the *TRKB* gene (T1 variant: 221796\_at and 221795\_at; **Figure 2A**). We chose to further explore TrkB because (1) there were 2 different TrkB probe sets that were included in the final filtered list, suggestive of internal replication; (2) there were a large number of subjects with extreme expression values for both TrkB probe sets, all of whom had the same value for both TrkB probe sets; and (3) TrkB previously has been related to suicidal behavior.<sup>42</sup> The results observed for TrkB using the EVA method were

also significant when standard microarray analysis methods were used (supplemental Figure S1). An analysis of BDNF expression level between groups did not reveal any statistically significant findings (supplemental Table S3).

#### ANALYSIS OF TrkB PROBE SETS IN AFFYMETRIX CHIPS

There are 6 probe sets specific to TrkB on the HG-U133 chips (Affymetrix, High Wycombe, England). Using the Ensembl genome browser program (<http://www.ensembl.org>) and a recent article describing the genomic organization of TrkB,<sup>45</sup> we found that 214680\_at, 221795\_at, and 221796\_at (2 of which are the probe sets we observed as differentially expressed after the EVA) are specific to exon 16, whereas 236095\_at is specific to exon 19, and 207152\_at and 229463\_at are specific to exon

24. Each of these exons is specific to a different splice variant of TrkB. Exon 16 is particular only to TrkB.T1, whereas exons 19 and 24 are specific to TrkB.T2 and full-length TrkB (TrkB.FL), respectively.<sup>45</sup>

We again performed our microarray analysis with the subjects who had previously undergone analysis using the HG-U133 A and B chip set to further assess the reliability of our findings (see the supplemental material). This analysis supported our initial findings.

### STRONG CORRELATION WITHIN TRKB.T1 PROBE SETS ACROSS SUBJECTS

Given that 3 different probe sets are designed to interrogate TrkB.T1, we asked how well the 3 probe sets correlated with each other across all subjects. The following Pearson correlation values between the TrkB.T1 probe sets were excellent, suggesting a high degree of consistency, which is expected for probe sets measuring the same gene transcript: for 221796\_at and 221795\_at,  $r=0.90$  ( $P<.001$ ); for 221795\_at and 214680\_at,  $r=0.91$  ( $P<.001$ ); and for 214680\_at and 221796\_at,  $r=0.87$  ( $P<.001$ ). The 214680\_at probe set was narrowly filtered out at an early stage of the EVA.

### SEMIQUANTITATIVE PCR AND WESTERN BLOT ANALYSIS OF TrkB.T1 LOW EXPRESSORS AND MATCHED CONTROLS

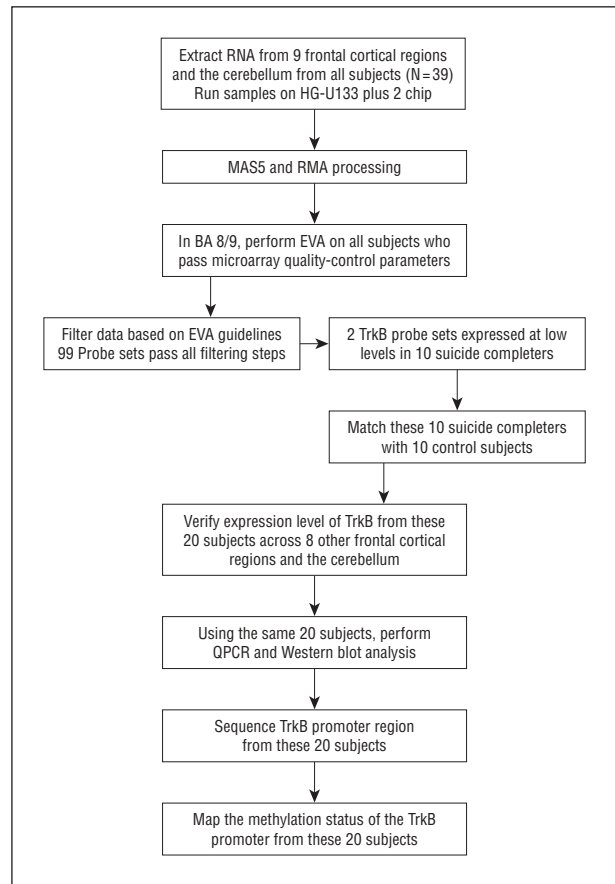
The 10 suicide completers who were identified in the EVA screen as being low expressors of TrkB.T1 were matched to 10 controls for age, PMI, and pH (**Table 2**). We performed semiquantitative PCR (Figure 2B) and Western blot (Figure 2C) analysis to validate and further investigate at the protein level the results from the microarray analysis.

To confirm the validity of the TrkB.T1 microarray results, we designed primers to probe set binding sites specific to exon 16 of TrkB for semiquantitative PCR analysis. We used messenger RNA (mRNA) extracted from independent BA 8/9 brain samples, which were from tissue adjacent to the initial section used for the microarray experiment. There was a significant difference in the levels of mRNA between the low expressors of TrkB.T1 and the matched controls (Figure 2B;  $t_{18}=3.47$  [ $P=.003$ ]). To ensure the reliability of this finding, we redesigned primers that bound to exons 15 and 16, guaranteeing non-contamination of genomic DNA ( $t_{18}=4.88$  [ $P=.001$ ]). We then used Western blot analysis to investigate whether expression of the TrkB.T1 protein was similarly reduced and found a significant reduction in the protein levels of TrkB.T1 (Figure 2C;  $t_{18}=4.98$  [ $P=.001$ ]).

There was excellent predictive value among the quantitative PCR, Western blot, and microarray experiments (quantitative PCR–Western blot [ $n=20$ ],  $r=0.79$ ; quantitative PCR–microarray [ $n=19$ ],  $r=0.64$ ; Western blot–microarray [ $n=19$ ],  $r=0.44$ ).

### ANALYSIS ACROSS 8 OTHER FRONTAL CORTICAL REGIONS AND THE CEREBELLUM

We screened 8 other frontal cortical regions to determine (1) whether the low expressors of TrkB.T1 from the BA



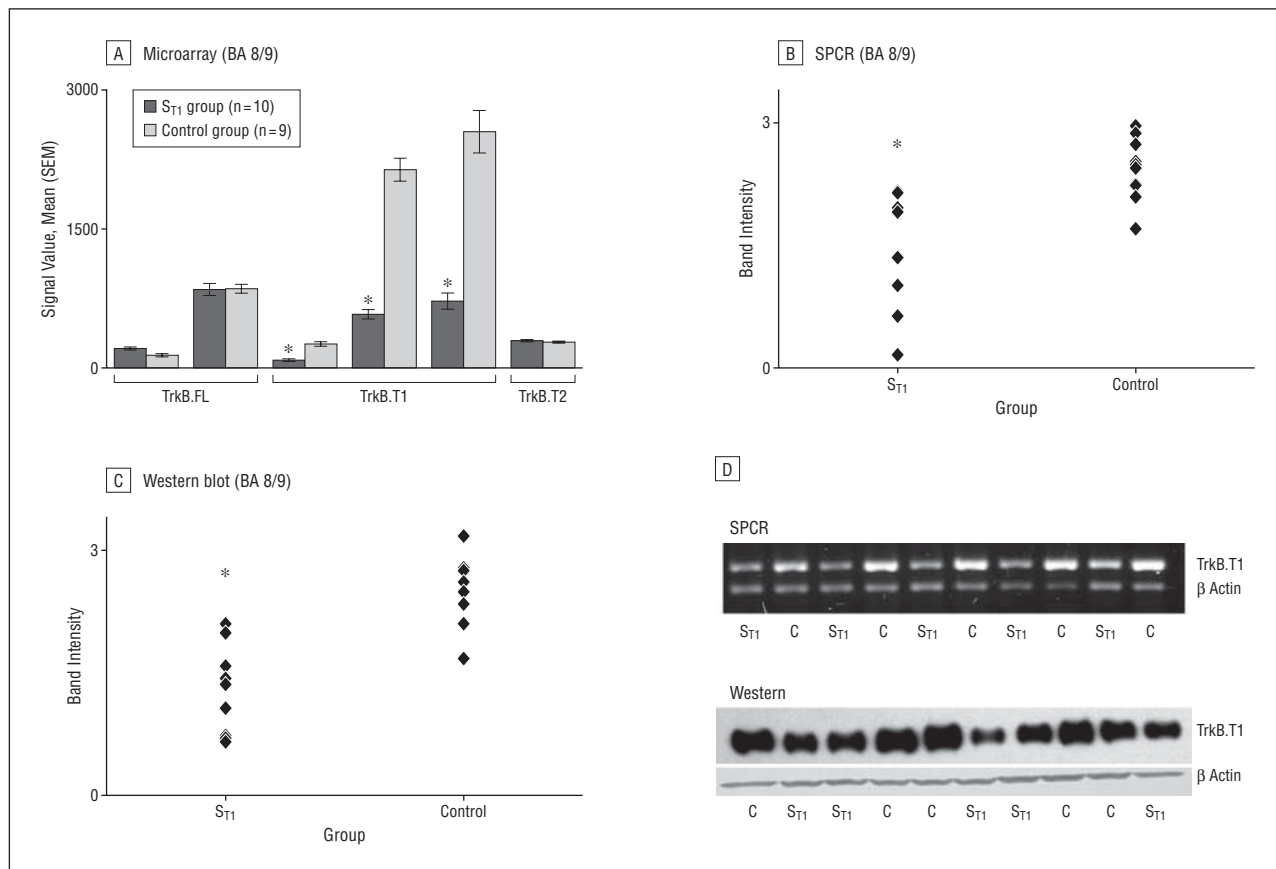
**Figure 1.** Flowchart of study stages. BA indicates Brodmann area; EVA, extreme values analysis; MAS5, Microarray Suite, version 5; QPCR, quantitative polymerase chain reaction; RMA, robust multichip average; and TrkB, tropomyosin-related kinase B. The HG-U133 plus 2 chip is available from Affymetrix (High Wycombe, England).

8/9 analysis also show reduced expression in neighboring regions with regard to the TrkB.T1 probe sets, and (2) whether low expression of TrkB.T1 was specific to the frontal cortex. For this second analysis, we performed microarray analysis using RNA extracted from the cerebellum.

There were 10 suicide completers with low expression of TrkB.T1. To understand whether these subjects with low TrkB.T1 expression from BA 8/9 also had low expression of TrkB.T1 in other brain regions, we compared all of these subjects with controls across 8 frontal cortical regions and the cerebellum (**Figure 3A**). There was some variability in the number of subjects across regions because of sample and microarray quality-control parameters. Numbers of subjects per group in each region are indicated in the legend to Figure 3. We observed a highly significant difference in the expression level of TrkB.T1 across all frontal cortical regions in these subjects but not in the cerebellum. The findings of all TrkB.T1 probe sets were significant across regions in the frontal cortex and not the cerebellum, whereas TrkB.FL and TrkB.T2 expression were not significant in any region (Figure 3).

To validate the microarray results in frontal areas other than BA 8/9, we extracted new tissue from 3 frontal cortical regions (BAs 11, 44, and 45) for each suicide completer who had low expression of TrkB.T1 and the





**Figure 2.** Reduced expression of a truncated form of tropomyosin-related kinase B (TrkB.T1) in Brodmann areas 8 and 9 (BA 8/9) of suicide completers. A, Results of HG-U133 plus 2 microarray (Affymetrix, High Wycombe, England) from the extreme values analysis (EVA). Each probe set is represented by normal control subjects (control group; n=9) and the subgroup of suicide completers who passed EVA filtering (S<sub>T1</sub>; n=10). The full-length TrkB (TrkB.FL) probe set order is 207152\_at and 229463\_at. The TrkB.T1 probe set order as listed on the graph is 214680\_at, 221795\_at, and 221796\_at. B, Semiquantitative polymerase chain reaction (SPCR) analysis of the 10 suicide completers who passed EVA filtering (TrkB.T1 low expressors [S<sub>T1</sub> group]) and 10 matched controls (control group). C, Western blot analysis of the 10 suicide completers who passed EVA filtering (TrkB.T1 low expressors [S<sub>T1</sub> group]) and 10 matched controls. D, Example of SPCR and Western blot gels used to generate data. C indicates control; S<sub>T1</sub>, suicide completer with low TrkB.T1 expression. \**P* < .05.

matched controls (n=20 subjects) and conducted semiquantitative PCR experiments. This tissue was independent from the tissue used in the microarray experiments. The *P* values from the unpaired, 2-tailed *t* tests between suicide completers and controls in each region were less than .01. In all frontal regions, suicide completers with low expression of TrkB.T1 showed reduced expression of TrkB.T1 mRNA compared with controls.

#### CONTROL EXPERIMENTS PMI, pH, AGE, AND TOXICOLOGICAL FINDINGS

Effects of pH, PMI, and age for all subjects across all experiments are given in Table 2. To further understand the role of these variables on TrkB.T1 expression, we performed correlation analyses using semiquantitative PCR TrkB.T1 data from the suicide completers with low TrkB.T1 expression (n=10) and the matched controls (n=10) from BA 8/9. We questioned whether PMI, pH, or age predicts levels of TrkB.T1, irrespective of group membership.

We found no significant correlations between any of these variables and the level of TrkB.T1 expression (pH,  $r = -0.23$  [*P* = .33]; PMI,  $r = -0.07$  [*P* = .78]; and age,  $r = 0.23$  [*P* = .32]). There was also no significant correlation be-

tween PMI and protein level ( $r = -0.18$  [*P* = .45]). All analyses in this study were recomputed using age, pH, and PMI as covariates (supplemental Table S4).

Very few subjects had positive toxicological findings for psychotropics (Table 1). Although certain psychotropic medications are known to alter the expression of BDNF in the brain of laboratory animals,<sup>46,47</sup> their effect on levels of TrkB is less clear.<sup>48</sup> There were 3 suicide completers in this study who had positive toxicological evidence of psychotropic medications, none of whom had low expression of TrkB.T1.

We next assessed the effects of lifetime history of alcohol abuse or dependence and history of cocaine use on the expression level of TrkB.T1 in BA 8/9. Three controls and 4 suicide completers with low TrkB.T1 expression had a history of alcohol abuse/dependence, and 2 suicide completers with low TrkB.T1 expression had cocaine found in the toxicological screen (Table 1). We grouped semiquantitative PCR data from the 10 subjects with a history of alcohol abuse or dependence and compared them with the data of all other subjects (no history of alcohol abuse or dependence). A history of alcohol abuse or dependence did not significantly affect the expression level of TrkB.T1 ( $t_{18} = 0.68$  [*P* = .50]). A history of cocaine abuse also did not affect levels of TrkB.T1 ( $t_{18} = 0.83$  [*P* = .42]).

**Table 2. Age, pH, and PMI Summary for All Comparisons**

Design	Group (No. of Subjects)	Age, y	pH	PMI, h
Total MA (N=39)				
Mean (SEM)	Control (11)	39.6 (3.8)	6.50 (0.08)	22.7 (1.7)
	S <sub>All</sub> (28)	39.5 (2.4)	6.57 (0.06)	26.3 (1.4)
Range		18-58	6.0-6.96	12-45
<i>t</i> Test <sup>a</sup>		0.96	0.79	1.43
<i>P</i> value		.35	.43	.16
BA 8/9 MA (N=31)				
Mean (SEM)	Control (9)	43.1 (3.7)	6.50 (0.09)	22.9 (2.1)
	All of S <sub>T1</sub> and some of S <sub>NoT1</sub> (22)	35.3 (2.9)	6.54 (0.06)	26.4 (1.6)
Range		19-58	6.0-6.96	12-45
<i>t</i> Test <sup>b</sup>		1.55	0.42	1.43
<i>P</i> value		.13	.68	.16
QPCR, epigenetics (N=20)				
Mean (SEM)	Control (10)	39.5 (4.2)	6.54 (0.06)	22.7 (1.9)
	S <sub>T1</sub> (10)	32.5 (3.6)	6.59 (0.06)	28.8 (1.8)
Range		21-58	6.17-6.75	12-34
<i>t</i> Test <sup>c</sup>		1.33	0.52	1.81
<i>P</i> value		.22	.61	.13

Abbreviations: BA 8/9, Brodmann areas 8 and 9; MA, microarray experiment; PMI, postmortem interval; QPCR, quantitative polymerase chain reaction; S<sub>All</sub>, all suicide completers; S<sub>NoT1</sub>, suicide completers without low expression of a truncated variant of the tropomyosin-related kinase B (TrkB.T1); S<sub>T1</sub>, suicide completers with low expression of TrkB.T1.

<sup>a</sup> *df*=37.

<sup>b</sup> *df*=29.

<sup>c</sup> *df*=18.

To experimentally rule out the possibility that our results are a consequence of comorbidity with alcohol or cocaine use, we modeled cocaine and long- and short-term alcohol abuse in rats to further clarify their role on TrkB.T1 expression (see the supplemental material).

#### ASTROCYTE CONTROL EXPERIMENTS

The TrkB.T1 variant is expressed in astrocytes in the adult brain.<sup>18,49</sup> To determine whether the effect we observed was a result of a reduction in the number of astrocytes,<sup>50,51</sup> we used microarray data and quantitative PCR to analyze the mean of glial fibrillary acid protein (GFAP; probe set 203540\_at) between groups. Glial fibrillary acid protein is the most commonly used molecular marker of astrocytes in the brain; we could not detect a difference in the expression level of GFAP between the controls and the suicide completers with low levels of TrkB.T1 expression. For all 3 probe sets specific to TrkB.T1, the TrkB.T1:GFAP ratio was always at least 2-fold lower in the low-TrkB.T1 suicide subgroup compared with the control group. Finally, we performed quantitative PCR experiments to confirm that there was no significant difference in the levels of GFAP between groups ( $t_{18}=1.10$  [ $P=.27$ ]).

#### PROMOTER SEQUENCING

We next asked whether any genetic variation in particular regions of this gene was associated with a reduction in expression of TrkB.T1. Obvious sites of genetic variation that could affect expression level were the promoter region and the splice junctions surrounding exon 16 (**Figure 4A**).<sup>45,52</sup> We defined the promoter region similar to that proposed in the mouse.<sup>53</sup> We then confirmed that this region has promoter activity in humans (supple-

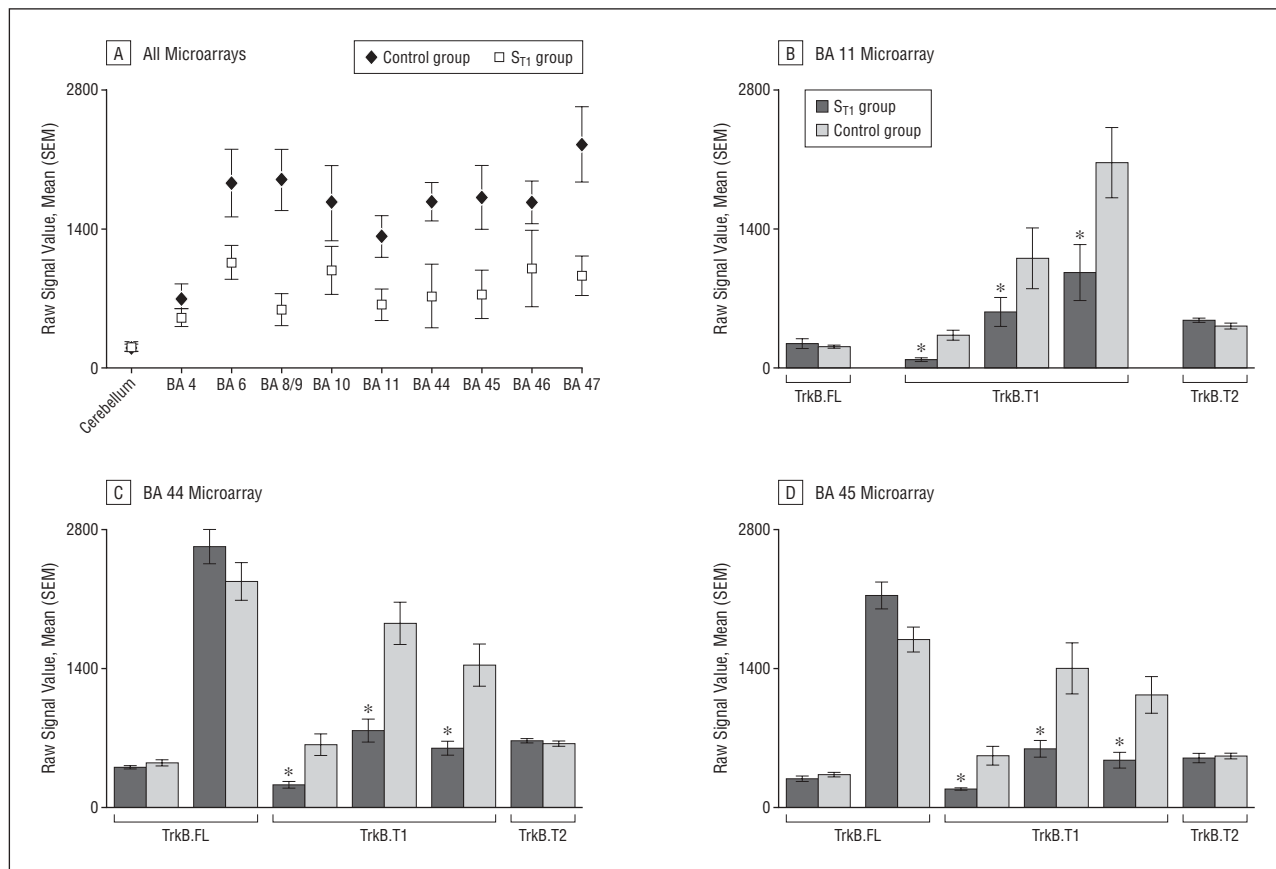
mental material). We found no association between any promoter variants and TrkB.T1 expression level (supplemental material).

#### ASSESSMENT OF METHYLATION STATE OF THE TrkB PROMOTER IN BA 8/9 AND THE CEREBELLUM

We next asked whether epigenetic differences might account for the expression differences observed in the *TRKB* gene. We reasoned that this could be a possible mechanism, despite there being 2 other unchanged transcripts potentially from the same promoter region, given that TrkB.T1 is the only TrkB isoform expressed in astrocytes under normal conditions. To control for assay variability and other stochastic effects leading to erroneous conclusions, we randomized important variables in every experimental step (sodium bisulfite treatment, cloning, and sequencing were performed blind to group status and in pairs).

Technical issues involving the conversion of cytosine to uracil using bisulphite treatment has been the subject of some debate.<sup>54,55</sup> Amplification bias of bisulfite-converted products is also a potential confounder of methylation mapping.<sup>56</sup> (Control experiments related to these technical issues can be found in the supplemental material.)

We cloned a 440-base pair sequence from the 10 suicide completers with low TrkB.T1 expression and 10 matched controls used throughout this study in BA 8/9 (all raw data are shown in supplemental Figure S4 and Figure S5). We found a significant difference ( $t_{18}=2.60$  [ $P=.02$ ]) in mean methylation level per clone when we compared suicide completers (1.72 [0.1] methylated sites per clone) and controls (1.17 [0.18] methylated sites per



**Figure 3.** Reduced expression of a truncated form of tropomyosin-related kinase B (TrkB.T1) in 8 frontal cortical regions but not in the cerebellum. A, Global expression of TrkB.T1 across the frontal cortex and cerebellum (probe set 221795\_at). Numbers for the suicide completers with low TrkB.T1 expression ( $S_{T1}$ ) and control subjects across all the regions were as follows:  $S_{T1}=9$  and control=11 for the cerebellum;  $S_{T1}=7$  and control=8 for Brodmann area (BA) 4;  $S_{T1}=5$  and control=7 for BA 6;  $S_{T1}=10$  and control=9 for BA 8/9;  $S_{T1}=4$  and control=6 for BA 10;  $S_{T1}=6$  and control=7 for BA 11;  $S_{T1}=9$  and control=11 for BA 44;  $S_{T1}=8$  and control=11 for BA 45;  $S_{T1}=6$  and control=7 for BA 46; and  $S_{T1}=8$  and control=9 for BA 47. B-D, The TrkB.T1 probe set order as listed on the graph is 214680\_at, 221795\_at, and 221796\_at. \* $P < .05$ . B, All TrkB probe sets from BA 11 from all suicide completers with low TrkB.T1 expression ( $S_{T1}$  group) and matched controls who passed microarray quality control. Probe set 229643\_at failed quality control in BA 11 (not shown). C, Signal intensity of all TrkB probe sets in BA 44. D, Signal intensity of all TrkB probe sets in BA 45. TrkB.FL indicates full-length TrkB. In C and D, the TrkB.T2 probe set is 236095\_at and the TrkB.FL probe set is 229463\_at.

clone). Most methylation was reserved to 2 CpG dinucleotides, sites 2 and 5 (Figure 4 and **Figure 5** and supplemental Figures S4 and S5). We therefore generated methylation frequencies for each subject at sites 2 and 5 (eg, the number of methylated cytosines at site 2 per the total number of clones). At site 2, a  $t$  test analysis revealed a marginally nonsignificant  $P$  value of .07 ( $t_{18}=1.90$ ). At site 5, the  $t$  test  $P$  value was .03 ( $t_{18}=2.40$ ). To determine whether there was an association between methylation and expression level, we  $\log_2$  transformed microarray data and performed correlations between expression level of TrkB.T1 (221795\_at) and methylation frequency across all subjects (**Figure 6**). The Pearson correlation was significant for sites 2 ( $r=-0.56$  [ $P=.01$ ]) and 5 ( $r=-0.62$  [ $P=.004$ ]). We also investigated the Pearson value when only suicide completers or controls were examined (supplemental Figure S6).

To demonstrate the specificity of this finding, we also used DNA extracted from the cerebellum to analyze methylation patterns in CpG sites 2 and 5 from the TrkB promoter (**Figure 7**). We found a paucity of methylation in DNA extracted from the cerebellum from all subjects.

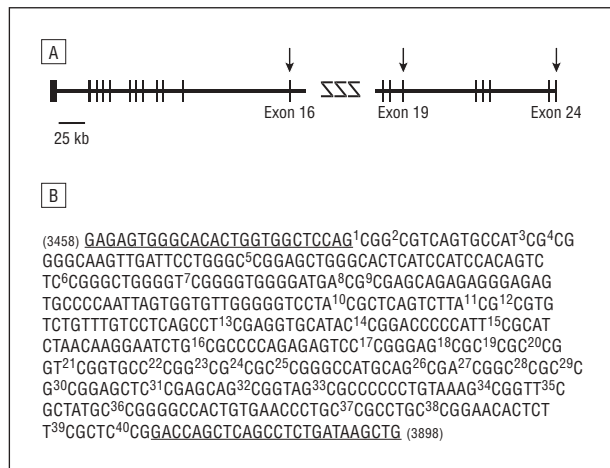
Six of 10 suicide completers with low expression of TrkB.T1 had major depressive disorder (MDD), which

suggests that the relationship observed between TrkB.T1 expression level and methylation state is due to the presence of MDD. To fully rule out this possibility, we selected 5 subjects with MDD from the suicide completers group who did not previously undergo epigenetic analysis. We isolated DNA from BA 8/9 of the frontal cortex of these subjects, treated the DNA with bisulfite, and cloned the PCR product (10 clones per subject). Of these 5 subjects, one had 2 clones methylated at CpG site 5 and another had 1 clone methylated at site 5. Therefore, there was very little methylation at sites 2 and 5 from these suicide completers with MDD and high expression of TrkB.T1.

#### COMMENT

This study has demonstrated in a subset of suicide completers that TrkB.T1 is significantly downregulated in the frontal cortex compared with controls and that this downregulation is associated with methylation at specific CpG dinucleotides proximal to the coding region.

The TrkB.T1 variant is the only TrkB isoform that is expressed in astrocytes and that binds BDNF, an impor-

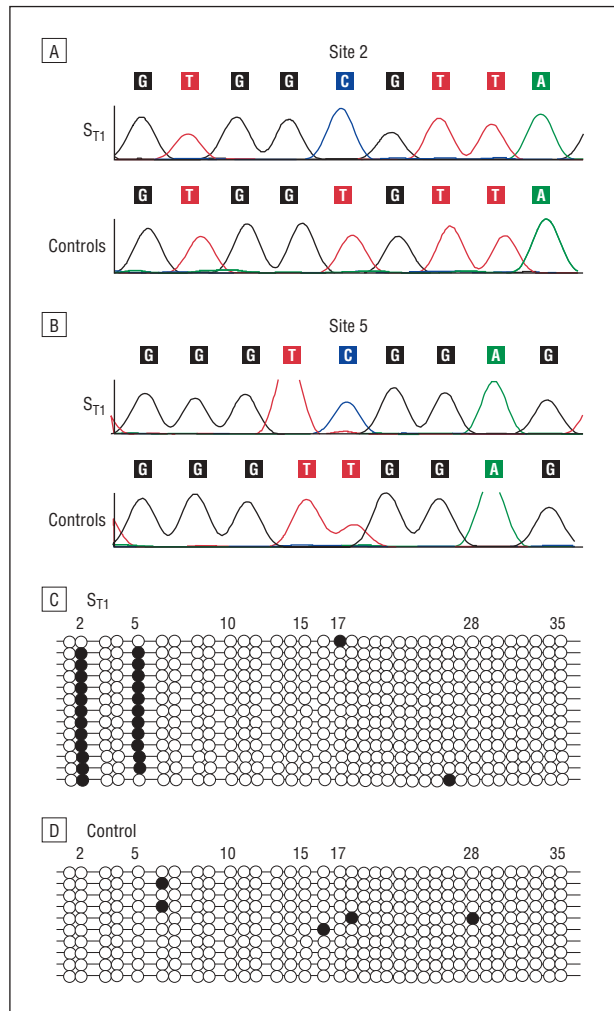


**Figure 4.** Structure of the tropomyosin-related kinase B (*TRKB*) gene and promoter region. A, Exon/intron view of the *TRKB* gene. Vertical lines represent exons; horizontal lines, intronic regions. The break in the intronic region is a 250-kilobase (kb) space. Down arrows represent exons whose presence in a transcript defines major *TrkB* isoforms (all have stop codons). Exon 16 (first arrow from left), exon 19 (second arrow), and exon 24 (third arrow) are specific to truncated forms of *TrkB* (*TrkB.T1* and *TrkB.T2*) and full-length *TrkB* (*TrkB.FL*), respectively. B, A portion of the *TrkB* promoter. Superscript numbers represent CpG nucleotides referenced in the "Assessment of Methylation State of the *TrkB* Promoter in BA 8/9 and the Cerebellum" subsection of the "Results" section. Underlined segments are the primer-binding sites for primers specific for bisulfite-treated DNA from Brodmann areas 8 and 9. Parenthetical subscript numbers indicate the nucleotide position number.

tant neurotrophic factor in the brain.<sup>17</sup> The initial reports that characterized *TrkB.T1* investigated its in situ hybridization pattern and reported that *TrkB.T1* was expressed in nonoverlapping patterns with the *TrkB.FL* isoform,<sup>57,58</sup> in which the *TrkB.FL* isoform was shown to be expressed in neurons and the *TrkB.T1* isoform expressed mostly in glia and to a lesser extent in ependymal and choroid plexus cells. The expression of *TrkB.T2* was shown to overlap with that of *TrkB.FL* and to be restricted to neuronal cells, a pattern also confirmed by independent studies.<sup>59</sup> To our knowledge, there are no published reports of *TrkB.T1* expressed in microglia or oligodendrocytes, which suggests that the glial cells where *TrkB.T1* is expressed are astrocytes, an idea confirmed by many groups.<sup>17,21,60</sup> A more recent report using more refined anatomical techniques confirms that *TrkB.T1* expression is essentially localized to glial cells.<sup>61</sup> After brain lesions (chronic brain injury), reactive astrocytes can express *TrkB.FL*,<sup>62</sup> and there is 1 report of *TrkB.T1* expression in neurons in 1 layer of monkey cortex.<sup>63</sup>

We found that *TrkB.T1* expression was associated with more methylation at 2 particular sites in the *TrkB* promoter. Although we made every effort to control for confounders such as PMI, pH, age, toxicological findings, and presence of MDD, we cannot fully rule out the potential effect of other factors such as antidepressant therapy that was stopped in the past and not detected in the toxicological examination, other stress factors, or unknown environmental factors.

We observed an association between methylation state and decreased expression of *TrkB.T1*, but 2 other variants that may be transcribed from the same promoter region were unaffected. First, it could be that the promoter

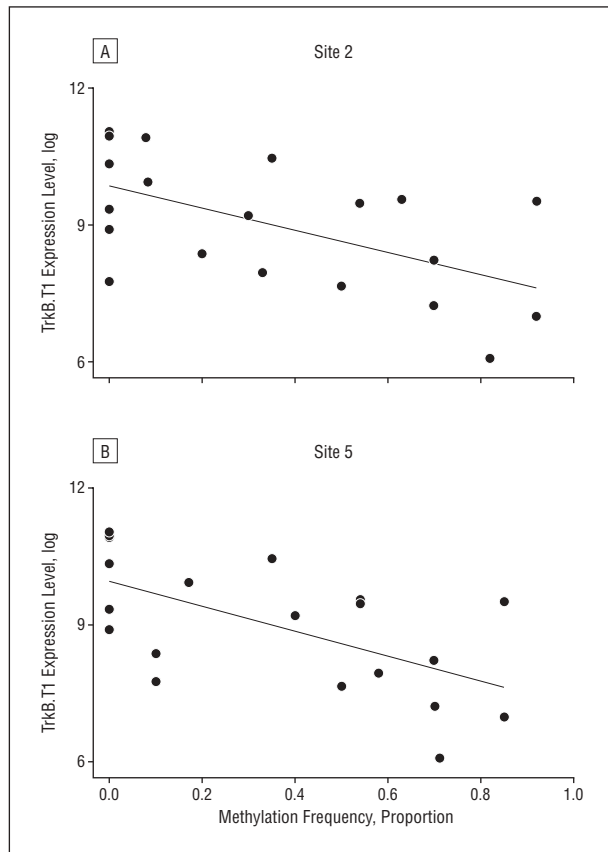


**Figure 5.** Methylation mapping of the tropomyosin-related kinase B (*TrkB*) promoter region. A and B, Examples of sequencing results from bisulfite-treated DNA at sites 2 (A) and 5 (B). C, Representative data from 1 suicide completer with low expression of a truncated form of *TrkB* (*TrkB.T1*) (*S<sub>T1</sub>*). Each circle represents a CpG position in DNA. Solid circles represent CpG sites that are methylated. Selected CpG sites are numbered, and each line represents 1 clone. Clones from the frontal cortex (Brodmann areas 8 and 9) are shown. D, Representative methylation results from 1 control subject.

region examined in this study is specific to the *T1* variant of *TrkB*. One study of the *TrkB* promoter region in the mouse identified 2 different promoters, although both seemed to promote transcription equally for all transcripts.<sup>52</sup> Second, it could be that this methylation pattern occurs only in astrocytes, where only *TrkB.T1* is expressed.<sup>17,61</sup> This would suggest that the cellular machinery targeting methylation to this region is astrocyte specific. Methylation events that occur in a cell type-specific way are known in assorted tissue types.<sup>64,65</sup> Because astrocytes express *TrkB.T1* exclusively, the methylation of this promoter region would affect only this isoform of *TrkB*. Third, it could be that the methylation pattern is present in most cells of the affected brain, but that the regulation of the promoter region in astrocytes is different from that of neurons or other cells in the brain.

Stratifying subjects from psychiatric postmortem samples based on the low expression level of 1 marker

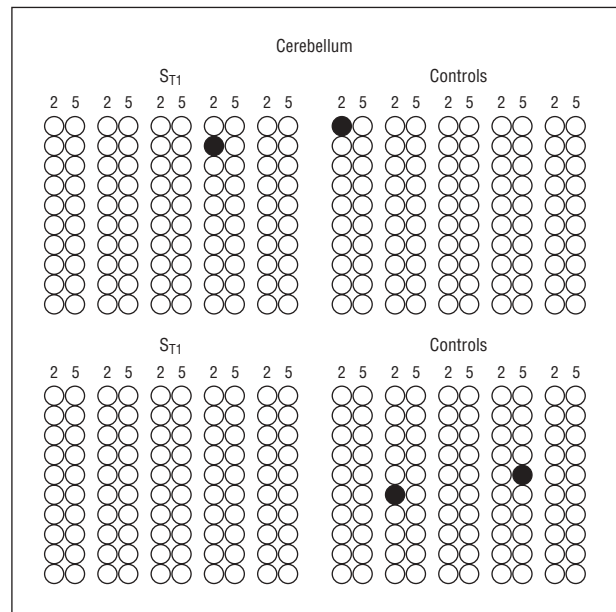




**Figure 6.** Correlation analysis of a truncated form of tropomyosin-related kinase B (TrkB.T1) expression and methylation frequency at CpG sites 2 (A) and 5 (B) of the TrkB.T1 promoter.

could be seen as an invalid experimental design. In this study, we used an a priori method to detect extreme values in suicide completers, controlling for variation in controls. This nonbiased mathematical algorithm is similar to other methods used to detect extreme values<sup>39,41</sup> in microarray data. Even when mean group effects were analyzed for TrkB.T1 expression level, there was a significant difference when suicide completers were compared with controls. Individual markers may be important for some diseases and irrelevant for others. For instance, in the case of Alzheimer disease and amyotrophic lateral sclerosis, a single marker is enough to define a subset of affected individuals.<sup>66,67</sup> Given that psychiatric disorders are widely believed to be etiologically heterogeneous, a fact often credited for frequent lack of replication in biological psychiatric studies, it seems that at least attempting this approach is valid. In this regard, promising findings based on subgroup or individual effects were recently published about autism<sup>36</sup> and schizophrenia.<sup>68</sup>

Suicide is a heterogeneous phenomenon that is almost always associated with psychopathological disorders, particularly mood and substance disorders and schizophrenia.<sup>69</sup> Many of these factors are comorbid.<sup>70</sup> Studies investigating the neurobiological mechanisms of suicide suggest that individuals who commit suicide have a certain individual predisposition that is independent from that associated with psychopathological abnormality.<sup>71,72</sup> The heterogeneity associated with suicide leads to difficulties in experimental design, particularly if group



**Figure 7.** Analysis of methylation state of CpG sites 2 and 5 in DNA extracted from the cerebellum. Ten subjects each are represented in the suicide group (consisting of suicide completers with low tropomyosin-related kinase B [TrkB.T1] expression [ $S_{T1}$ ]) and the control group, and each subject contributes 10 clones (rows). Data for each subject consist of 2 columns that represent the methylation state of sites 2 and 5 from the TrkB promoter. Solid circles represent methylation; open circles, lack of methylation.

mean effects are assessed. We have proposed an analysis method that attempts to study the complicated phenotype more on an individual basis, in which individual data points are assessed.

Dwivedi et al<sup>42</sup> showed in a similar study that the TrkB.FL isoform is decreased in BA 9 of suicide completers. There are a number of possible reasons for the discrepant findings between the present study and that by Dwivedi et al. Using semiquantitative PCR analysis for TrkB and BDNF, Dwivedi et al reported a strong downregulation in TrkB and BDNF in suicide completers and identified corresponding changes at the protein level, although it is unclear which truncated form of TrkB their antibody detected.<sup>73</sup> The forward primer used by Dwivedi et al for TrkB semiquantitative PCR analysis, according to the published structure of the *TRKB* gene,<sup>45</sup> is specific to exon 10 of TrkB, and their reverse primer is specific to exon 12. Both of these exons are present in all TrkB isoforms.

The TrkB.T1 variant has no cytoplasmic catalytic activity, and it may therefore act by sequestering BDNF, thus competing for this ligand with neuronal TrkB.FL and decreasing TrkB second messenger activation. However, recent data suggest that TrkB.T1 plays a role beyond passive competition with the TrkB.FL receptor. This truncated form of the TrkB receptor has been convincingly shown to mediate neurotrophin-evoked calcium signaling in astrocytes.<sup>18</sup> Although glutamate and adenosine triphosphate are known to induce calcium transients in astrocytes,<sup>74</sup> BDNF is the most potent endogenous agonist for this process, required only at nanomolar concentrations.<sup>18</sup> Thus, it is feasible that reduction in TrkB.T1 in the frontal cortex may affect calcium signaling in astrocytes.

Submitted for Publication: December 6, 2007; final revision received April 21, 2008; accepted May 9, 2008.

Correspondence: Gustavo Turecki, MD, PhD, Department of Psychiatry, Douglas Hospital Research Institute, Pavilion Frank B Common, Room F-3125, 6875 LaSalle Blvd, Verdun, Montreal, QC H4H 1R3, Canada (gustavo.turecki@mcgill.ca).

Financial Disclosure: None reported.

Additional Information: The supplemental materials, tables, and figure are available at <http://www.douglasrecherche.qc.ca/suicide/>. This article is dedicated to the memory of Alaa El-Husseini. Mr C. Ernst is a Canada Graduate Scholar. Additional Contributions: We thank the Bureau du Coroner du Québec, Montreal, as well as liaison workers between the McGill Group for Suicide Studies and the Bureau. We also thank the families and interviewers who provided and collected information and Lilian Canetti (Quebec Suicide Brain Bank), who provided excellent technical assistance.

## REFERENCES

1. Mann JJ. The neurobiology of suicide. *Nat Med*. 1998;4(1):25-30.
2. Boëlle PY, Flahault A. Suicide trends in France and UK. *Lancet*. 1999;353(9161):1364.
3. Phillips MR, Li X, Zhang Y. Suicide rates in China, 1995-99. *Lancet*. 2002;359(9309):835-840.
4. Murray CJ, Lopez AD. Mortality by cause for eight regions of the world: Global Burden of Disease Study. *Lancet*. 1997;349(9061):1269-1276.
5. Anderson I, Crengle S, Kamaka ML, Chen TH, Palafox N, Jackson-Pulver L. Indigenous health in Australia, New Zealand, and the Pacific. *Lancet*. 2006;367(9524):1775-1785.
6. Okasha A. Mental health in the Middle East: an Egyptian perspective. *Clin Psychol Rev*. 1999;19(8):917-933.
7. Coyle JT, Schwarcz R. Mind glue: implications of glial cell biology for psychiatry. *Arch Gen Psychiatry*. 2000;57(1):90-93.
8. Czéh B, Simon M, Schmelting B, Hiemke C, Fuchs E. Astroglial plasticity in the hippocampus is affected by chronic psychosocial stress and concomitant fluoxetine treatment. *Neuropsychopharmacology*. 2006;31(8):1616-1626.
9. Hasler G, van der Veen JW, Tuminis T, Meyers N, Shen J, Drevets WC. Reduced prefrontal glutamate/glutamine and gamma-aminobutyric acid levels in major depression determined using proton magnetic resonance spectroscopy. *Arch Gen Psychiatry*. 2007;64(2):193-200.
10. Cotter D, Mackay D, Landau S, Kerwin R, Everall I. Reduced glial cell density and neuronal size in the anterior cingulate cortex in major depressive disorder. *Arch Gen Psychiatry*. 2001;58(6):545-553.
11. Araque A, Parpura V, Sanzgiri RP, Haydon PG. Tripartite synapses: glia, the unacknowledged partner. *Trends Neurosci*. 1999;22(5):208-215.
12. Porter JT, McCarthy KD. Astrocytic neurotransmitter receptors in situ and in vivo. *Prog Neurobiol*. 1997;51(4):439-455.
13. Scemes E, Giaume C. Astrocyte calcium waves: what they are and what they do. *Glia*. 2006;54(7):716-725.
14. Kettenman H, Ransom B. *Neuroglia*. 2nd ed. New York, NY: Oxford University Press Inc; 2005.
15. Wilkin GP, Marriott DR, Cholewinski AJ. Astrocyte heterogeneity. *Trends Neurosci*. 1990;13(2):43-46.
16. Seifert G, Schilling K, Steinhauser C. Astrocyte dysfunction in neurological disorders: a molecular perspective. *Nat Rev Neurosci*. 2006;7(3):194-206.
17. Rudge JS, Li Y, Pasnikowski EM, Mattsson K, Pan L, Yancopoulos GD, Wiegand SJ, Lindsay RM, Ip NY. Neurotrophic factor receptors and their signal transduction capabilities in rat astrocytes. *Eur J Neurosci*. 1994;6(5):693-705.
18. Rose CR, Blum R, Pichler B, Lepier A, Kafitz KW, Konnerth A. Truncated TrkB-T1 mediates neurotrophin-evoked calcium signalling in glia cells. *Nature*. 2003;426(6962):74-78.
19. Duman RS, Monteggia LM. A neurotrophic model for stress-related mood disorders. *Biol Psychiatry*. 2006;59(12):1116-1127.
20. Kim YK, Lee HP, Won SD, Park EY, Lee HY, Lee BH, Lee SW, Yoon D, Han C, Kim DJ, Choi SH. Low plasma BDNF is associated with suicidal behavior in major depression. *Prog Neuropsychopharmacol Biol Psychiatry*. 2007;31(1):78-85.
21. Condorelli DF, Dell'Albani P, Mudo G, Timmusk T, Belluardo N. Expression of neurotrophins and their receptors in primary astroglial cultures: induction by cyclic AMP-elevating agents. *J Neurochem*. 1994;63(2):509-516.
22. Frisén J, Verge VM, Fried K, Risling M, Persson H, Trotter J, Hökfelt T, Lindholm D. Characterization of glial trkB receptors: differential response to injury in the central and peripheral nervous systems. *Proc Natl Acad Sci U S A*. 1993;90(11):4971-4975.
23. Mercier G, Lennon AM, Renouf B, Dessouroux A, Ramaugé M, Courtin F, Pierre M. MAP kinase activation by fluoxetine and its relation to gene expression in cultured rat astrocytes. *J Mol Neurosci*. 2004;24(2):207-216.
24. Aston C, Jiang L, Sokolov BP. Transcriptional profiling reveals evidence for signaling and oligodendroglial abnormalities in the temporal cortex from patients with major depressive disorder. *Mol Psychiatry*. 2005;10(3):309-322.
25. Nakatani N, Hattori E, Ohnishi T, Dean B, Iwayama Y, Matsumoto I, Kato T, Osumi N, Higuchi T, Niwa S, Yoshikawa T. Genome-wide expression analysis detects eight genes with robust alterations specific to bipolar I disorder: relevance to neuronal network perturbation. *Hum Mol Genet*. 2006;15(12):1949-1962.
26. Vawter MP, Tomita H, Meng F, Bolstad B, Li J, Evans S, Choudary P, Atz M, Shao L, Neal C, Walsh DM, Burmeister M, Speed T, Myers R, Jones EG, Watson SJ, Akil H, Bunney WE. Mitochondrial-related gene expression changes are sensitive to agonal-pH state: implications for brain disorders. *Mol Psychiatry*. 2006;11(7):615, 663-679.
27. Tomita H, Vawter MP, Walsh DM, Evans SJ, Choudary PV, Li J, Overman KM, Atz ME, Myers RM, Jones EG, Watson SJ, Akil H, Bunney WE Jr. Effect of agonal and postmortem factors on gene expression profile: quality control in microarray analyses of postmortem human brain. *Biol Psychiatry*. 2004;55(4):346-352.
28. Labuda M, Labuda D, Korab-Laskowska M, Cole DE, Zietkiewicz E, Weissenbach J, Popowska E, Pronicka E, Root AW, Glorieux FH. Linkage disequilibrium analysis in young populations: pseudo-vitamin D-deficiency rickets and the founder effect in French Canadians. *Am J Hum Genet*. 1996;59(3):633-643.
29. Nolte J. *The Human Brain: An Introduction to Its Functional Neuroanatomy*. 5th ed. St Louis, MO: Mosby-Year Book Inc; 2002.
30. Haines D. *Neuroanatomy: An Atlas of Structures, Sections, and Systems*. 5th ed. Philadelphia, PA: Lippincott Williams & Wilkins; 2000.
31. Dumais A, Lesage AD, Alda M, Rouleau G, Dumont M, Chawky N, Roy M, Mann JJ, Benkelfat C, Turecki G. Risk factors for suicide completion in major depression: a case-control study of impulsive and aggressive behaviors in men. *Am J Psychiatry*. 2005;162(11):2116-2124.
32. Ernst C, Bureau A, Turecki G. Application of microarray outlier detection methodology to psychiatric research. *BMC Psychiatry*. April 23, 2008;8:29. doi:10.1186/1471-244X-8-29.
33. Ebmeier KP, Donaghey C, Steele JD. Recent developments and current controversies in depression. *Lancet*. 2006;367(9505):153-167.
34. Akbarian S, Ruhl MG, Bliven E, Luiz LA, Peranelli AC, Baker SP, Roberts RC, Bunney WE Jr, Conley RC, Jones EG, Tamminga CA, Guo Y. Chromatin alterations associated with down-regulated metabolic gene expression in the prefrontal cortex of subjects with schizophrenia. *Arch Gen Psychiatry*. 2005;62(8):829-840.
35. Millar JK, Pickard BS, Mackie S, James R, Christie S, Buchanan SR, Malloy MP, Chubb JE, Huston E, Baillie GS, Thomson PA, Hill EV, Brandon NJ, Rain JC, Camargo LM, Whiting PJ, Houslay MD, Blackwood DH, Muir WJ, Porteous DJ. DISC1 and PDE4B are interacting genetic factors in schizophrenia that regulate cAMP signaling. *Science*. 2005;310(5751):1187-1191.
36. Sebat J, Lakshmi B, Malhotra D, Troge J, Lese-Martin C, Walsh T, Yamrom B, Yoon S, KRasnitz A, Kendall J, Leotta A, Pai D, Zhang R, Lee YH, Hicks J, Spence SJ, Lee AT, Puura K, Lehtimäki T, Ledbetter D, Gregersen PK, Bregman J, Sutcliffe JS, Jobanputra V, Chung W, Warburton D, King MC, Skuse D, Geschwind DH, Gilliam TC, Ye K, Wigler M. Strong association of de novo copy number mutations with autism. *Science*. 2007;316(5823):445-449.
37. Friedman JM, Baross A, Delaney AD, Ally A, Arbour L, Armstrong L, Asano J, Bailey DK, Barber S, Birch P, Brown-John M, Cao M, Chan S, Charest DL, Farnoud N, Fernandes N, Filibotte S, Go A, Gibson WT, Holt RA, Jones SJ, Kennedy GC, Krzywinski M, Langlois S, Li HI, McGilivray BC, Nayar T, Pugh TJ, Rajcan-Separovic E, Schein JE, Schnerch A, Siddiqui A, Van Allen MI, Wilson G, Yong SL, Zahir F, Eydoux P, Marra MA. Oligonucleotide microarray analysis of genomic imbalance in children with mental retardation [published correction appears in *Am J Hum Genet*. 2006;79(6):1135]. *Am J Hum Genet*. 2006;79(3):500-513.
38. Weissman MM. Juvenile-onset major depression includes childhood- and adolescent-onset depression and may be heterogeneous. *Arch Gen Psychiatry*. 2002;59(3):223-224.
39. Lyons-Weiler J, Patel S, Becich MJ, Godfrey TE. Tests for finding complex patterns of differential expression in cancers: towards individualized medicine. *BMC Bioinformatics*. 2004;5:110.
40. Tibshirani R, Hastie T. Outlier sums for differential gene expression analysis. *Biostatistics*. 2007;8(1):2-8.
41. Tomlins SA, Rhodes DR, Perner S, Dhanasekaran SM, Mehra R, Sun XW, Varam-

- bally X, Cao X, Tchinda J, Kuefer R, Lee C, Montie JE, Shah RB, Pienta KJ, Rubin MA, Chinnaiyan AM. Recurrent fusion of TMPRSS2 and ETS transcription factor genes in prostate cancer. *Science*. 2005;310(5748):644-648.
42. Dwivedi Y, Rizavi HS, Conley RR, Roberts RC, Tamminga CA, Pandey GN. Altered gene expression of brain-derived neurotrophic factor and receptor tyrosine kinase B in postmortem brain of suicide subjects. *Arch Gen Psychiatry*. 2003; 60(8):804-815.
  43. Drevets WC, Price JL, Simpson JR Jr, Todd RD, Reich T, Vannier M, Raichle ME. Subgenual prefrontal cortex abnormalities in mood disorders. *Nature*. 1997; 386(6627):824-827.
  44. Cotter D, Mackay D, Chana G, Beasley C, Landau S, Everall IP. Reduced neuronal size and glial cell density in area 9 of the dorsolateral prefrontal cortex in subjects with major depressive disorder. *Cereb Cortex*. 2002;12(4):386-394.
  45. Stoilov P, Castren E, Stamm S. Analysis of the human TrkB gene genomic organization reveals novel TrkB isoforms, unusual gene length, and splicing mechanism. *Biochem Biophys Res Commun*. 2002;290(3):1054-1065.
  46. Yasuda S, Liang MH, Marinova Z, Yahyavi A, Chuang DM. The mood stabilizers lithium and valproate selectively activate the promoter IV of brain-derived neurotrophic factor in neurons [published online October 9, 2007]. *Mol Psychiatry*. doi:10.1038/sj.mp.4002099.
  47. Hashimoto R, Takei N, Shimazu K, Christ L, Lu B, Chuang DM. Lithium induces brain-derived neurotrophic factor and activates TrkB in rodent cortical neurons: an essential step for neuroprotection against glutamate excitotoxicity. *Neuropharmacology*. 2002;43(7):1173-1179.
  48. Lindén AM, Vaisanen J, Lakso M, Nawa H, Wong G, Castren E. Expression of neurotrophins BDNF and NT-3, and their receptors in rat brain after administration of antipsychotic and psychotropic agents. *J Mol Neurosci*. 2000;14(1-2):27-37.
  49. Ohira K, Kumanogoh H, Sahara Y, Homma KJ, Hirai H, Nakamura S, Hayashi M. A truncated tropomyosin-related kinase B receptor, T1, regulates glial cell morphology via Rho GDP dissociation inhibitor 1. *J Neurosci*. 2005;25(6):1343-1353.
  50. Si X, Miguel-Hidalgo JJ, O'Dwyer G, Stockmeier CA, Rajkowska G. Age-dependent reductions in the level of glial fibrillary acidic protein in the prefrontal cortex in major depression. *Neuropsychopharmacology*. 2004;29(11):2088-2096.
  51. Rajkowska G. Postmortem studies in mood disorders indicate altered numbers of neurons and glial cells. *Biol Psychiatry*. 2000;48(8):766-777.
  52. Baretino D, Pombo PM, Espliguero G, Rodriguez-Pena A. The mouse neurotrophin receptor trkB gene is transcribed from two different promoters. *Biochim Biophys Acta*. 1999;1446(1-2):24-34.
  53. Martens LK, Kirschner KM, Warnecke C, Scholz H. Hypoxia-inducible factor-1 (HIF-1) is a transcriptional activator of the TrkB neurotrophin receptor gene. *J Biol Chem*. 2007;282(19):14379-14388.
  54. Grayson DR, Jia X, Chen Y, Sharma RP, Mitchell CP, Guidotti A, Costa E. Reelin promoter hypermethylation in schizophrenia. *Proc Natl Acad Sci U S A*. 2005; 102(26):9341-9346.
  55. Tochigi M, Iwamoto K, Bundo M, Komori A, Sasaki T, Kato N, Kato T. Methylation status of the reelin promoter region in the brain of schizophrenic patients. *Biol Psychiatry*. 2008;63(5):530-534.
  56. Warnecke PM, Storzaker C, Melki JR, Millar DS, Paul CL, Clark SJ. Detection and measurement of PCR bias in quantitative methylation analysis of bisulphite-treated DNA. *Nucleic Acids Res*. 1997;25(21):4422-4426.
  57. Klein R, Conway D, Parada LF, Barbacid M. The trkB tyrosine protein kinase gene codes for a second neurogenic receptor that lacks the catalytic kinase domain. *Cell*. 1990;61(4):647-656.
  58. Beck KD, Lamballe F, Klein R, Barbacid M, Schauwecker PE, McNeill TH, Finch CE, Hefti F, Day JR. Induction of noncatalytic TrkB neurotrophin receptors during axonal sprouting in the adult hippocampus. *J Neurosci*. 1993;13(9):4001-4014.
  59. Wetmore C, Olson L. Neuronal and nonneuronal expression of neurotrophins and their receptors in sensory and sympathetic ganglia suggest new intercellular trophic interactions. *J Comp Neurol*. 1995;353(1):143-159.
  60. Ohira K, Funatsu N, Homma KJ, Sahara Y, Hayashi M, Kaneko T, Nakamura S. Truncated TrkB-T1 regulates the morphology of neocortical layer I astrocytes in adult rat brain slices. *Eur J Neurosci*. 2007;25(2):406-416.
  61. Silhol M, Bonnichon V, Rage F, Tapia-Arancibia L. Age-related changes in brain-derived neurotrophic factor and tyrosine kinase receptor isoforms in the hippocampus and hypothalamus in male rats. *Neuroscience*. 2005;132(3):613-624.
  62. McKeon RJ, Silver J, Large TH. Expression of full-length trkB receptors by reactive astrocytes after chronic CNS injury. *Exp Neurol*. 1997;148(2):558-567.
  63. Ohira K, Shimizu K, Yamashita A, Hayashi M. Differential expression of the truncated TrkB receptor, T1, in the primary motor and prefrontal cortices of the adult macaque monkey. *Neurosci Lett*. 2005;385(2):105-109.
  64. Boquest AC, Noer A, Sorensen AL, Vekterud K, Collas P. CpG methylation profiles of endothelial cell-specific gene promoter regions in adipose tissue stem cells suggest limited differentiation potential toward the endothelial cell lineage. *Stem Cells*. 2007;25(4):852-861.
  65. Yamasaki-Ishizaki Y, Kayashima T, Mapendano CK, Soejima H, Ohta T, Masuzaki H, Kinoshita A, Urano T, Yoshiura K, Matsumoto N, Ishimaru T, Mukai T, Niikawa N, Kishino T. Role of DNA methylation and histone H3 lysine 27 methylation in tissue-specific imprinting of mouse Grb10. *Mol Cell Biol*. 2007;27(2):732-742.
  66. Valdmantis PN, Dupre N, Rouleau GA. A locus for primary lateral sclerosis on chromosome 4ptel-4p16.1. *Arch Neurol*. 2008;65(3):383-386.
  67. Poirier J. Apolipoprotein E4, cholinergic integrity and the pharmacogenetics of Alzheimer's disease. *J Psychiatry Neurosci*. 1999;24(2):147-153.
  68. Walsh T, McClellan JM, McCarthy SE, Addington AM, Pierce SB, Cooper GM, Nord AS, Kusenda M, Malhotra D, Bhandari A, Stray SM, Rippey CF, Roccanova P, Makarov V, Lakshmi B, Findling RL, Sikich L, Stromberg T, Merriman B, Gogtay N, Butler P, Eckstrand K, Noory L, Gochman P, Long R, Chen Z, Davis S, Baker C, Eichler EE, Meltzer PS, Nelson SF, Singleton AB, Lee MK, Rapoport JL, King MC, Sebat J. Rare structural variants disrupt multiple genes in neurodevelopmental pathways in schizophrenia. *Science*. 2008;320(5875):539-543.
  69. Arseneault-Lapierre G, Kim C, Turecki G. Psychiatric diagnoses in 3275 suicides: a meta-analysis. *BMC Psychiatry*. 2004;4:37.
  70. Kim C, Lesage A, Seguin M, Chawky N, Vanier C, Lipp O, Turecki G. Patterns of co-morbidity in male suicide completers. *Psychol Med*. 2003;33(7):1299-1309.
  71. Turecki G. Dissecting the suicide phenotype: the role of impulsive-aggressive behaviours. *J Psychiatry Neurosci*. 2005;30(6):398-408.
  72. Brent DA, Bridge J, Johnson BA, Connolly J. Suicidal behavior runs in families: a controlled family study of adolescent suicide victims. *Arch Gen Psychiatry*. 1996; 53(12):1145-1152.
  73. Gestwa G, Wiechers B, Zimmermann U, Praetorius M, Rohbock K, Köpschall I, Zenner HP, Knipper M. Differential expression of trkB.T1 and trkB.T2, truncated trkC, and p75(NGFR) in the cochlea prior to hearing function. *J Comp Neurol*. 1999;414(1):33-49.
  74. Haydon PG. GLIA: listening and talking to the synapse. *Nat Rev Neurosci*. 2001; 2(3):185-193.